



**Digital Commons@**

Loyola Marymount University  
LMU Loyola Law School

---

Module 02: Land Use

Urban EcoLab

---

April 2021

## PowerPoint - New Orleans: A Case Study

Center for Urban Resilience

Follow this and additional works at: <https://digitalcommons.lmu.edu/urbanecolab-module02>



Part of the [Ecology and Evolutionary Biology Commons](#), [Environmental Education Commons](#), [Sustainability Commons](#), and the [Urban Studies and Planning Commons](#)

---

### Repository Citation

Center for Urban Resilience, "PowerPoint - New Orleans: A Case Study" (2021). *Module 02: Land Use*. 32. <https://digitalcommons.lmu.edu/urbanecolab-module02/32>

This Lesson 2: Biophysical and Social Drivers is brought to you for free and open access by the Urban EcoLab at Digital Commons @ Loyola Marymount University and Loyola Law School. It has been accepted for inclusion in Module 02: Land Use by an authorized administrator of Digital Commons@Loyola Marymount University and Loyola Law School. For more information, please contact [digitalcommons@lmu.edu](mailto:digitalcommons@lmu.edu).

# Urban EcoLab Curriculum

<http://www.urbanecolabcurriculum.com>



## New Orleans A case study

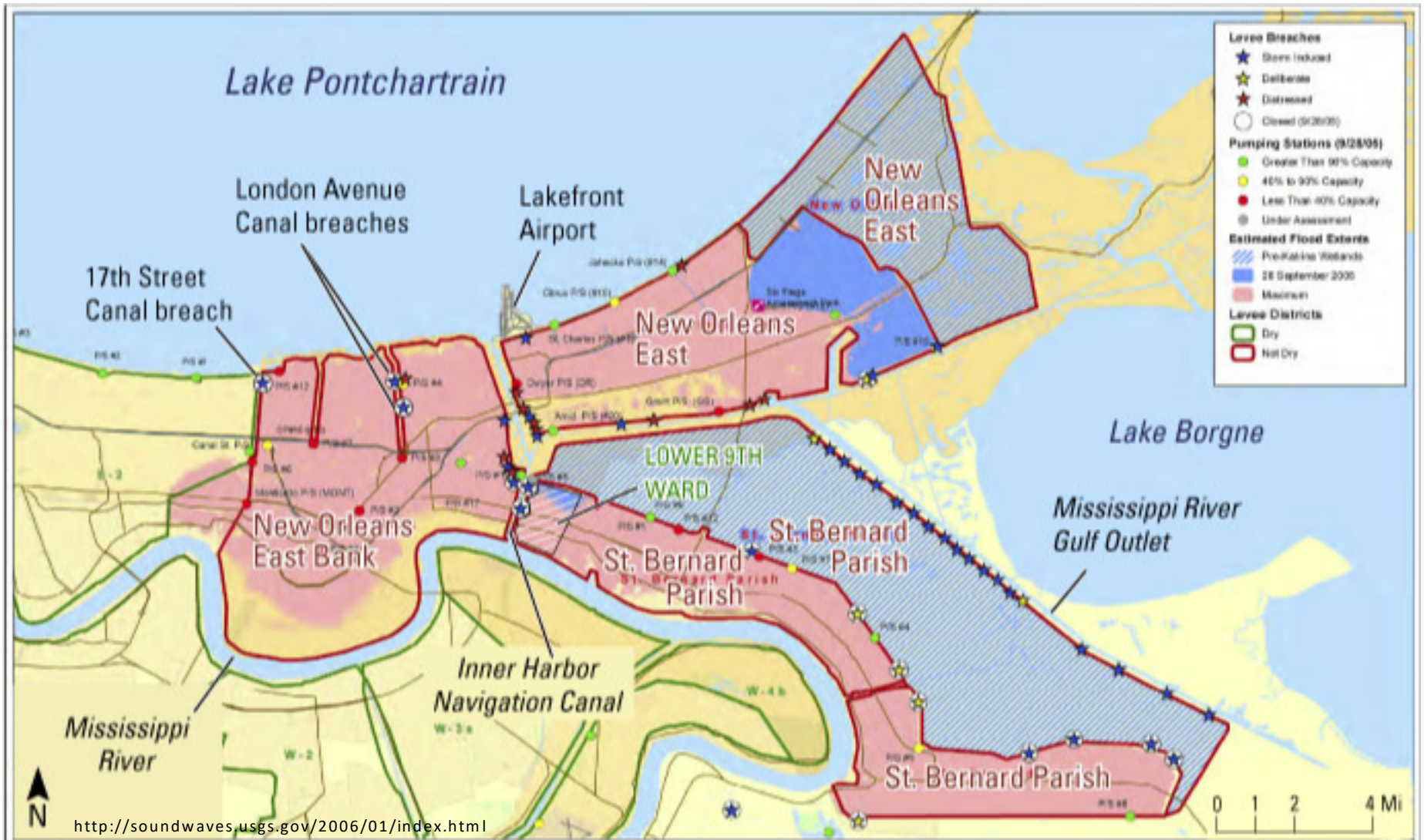
Module 2, Lesson 2



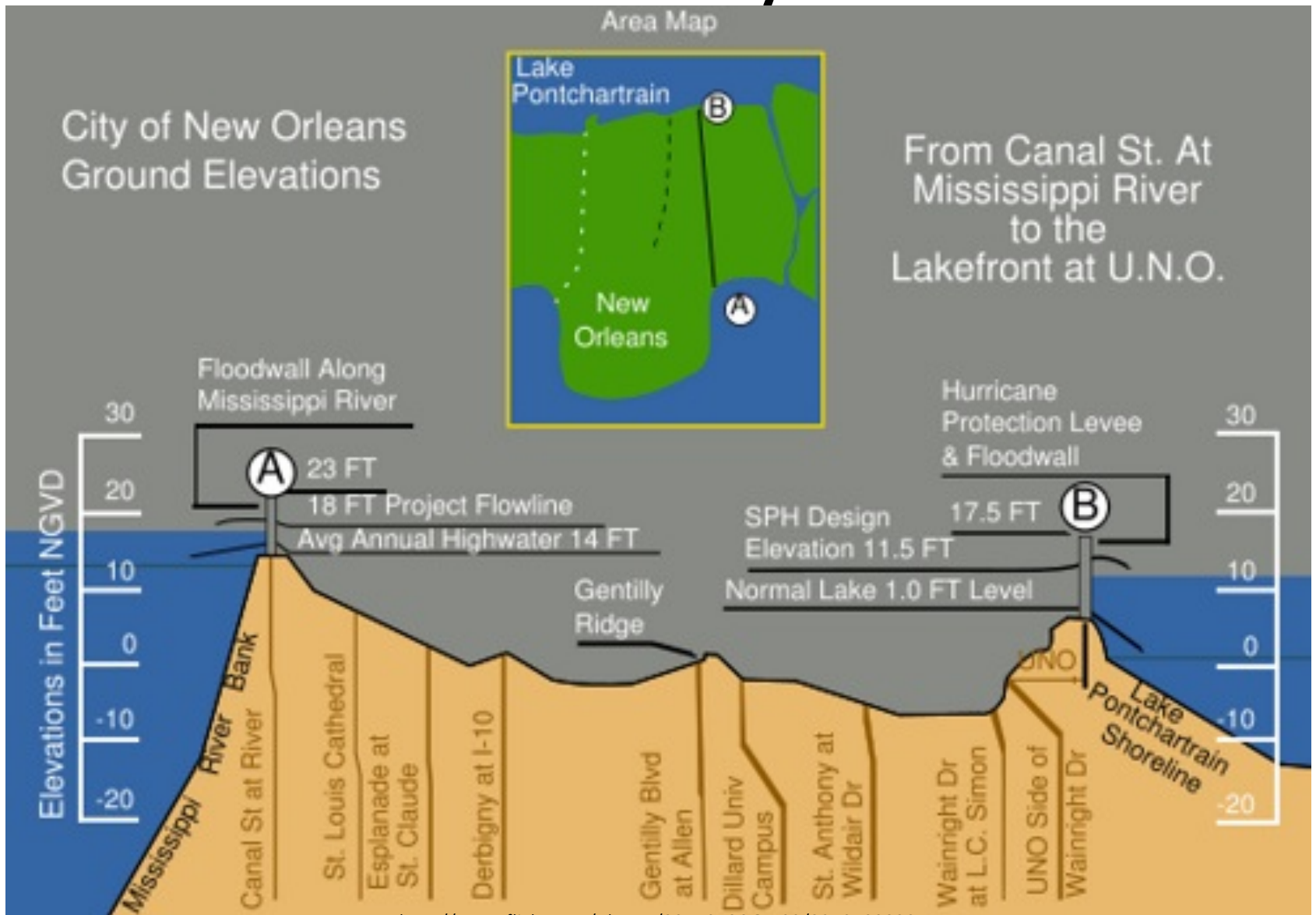
This material is based on work supported by the National Science Foundation ("NSF") under Grant No. 0607010. Any opinions, findings, and conclusions or recommendations expressed in this material are those of the authors and do not necessarily reflect the views of the National Science Foundation.



# Location



# The Levee System



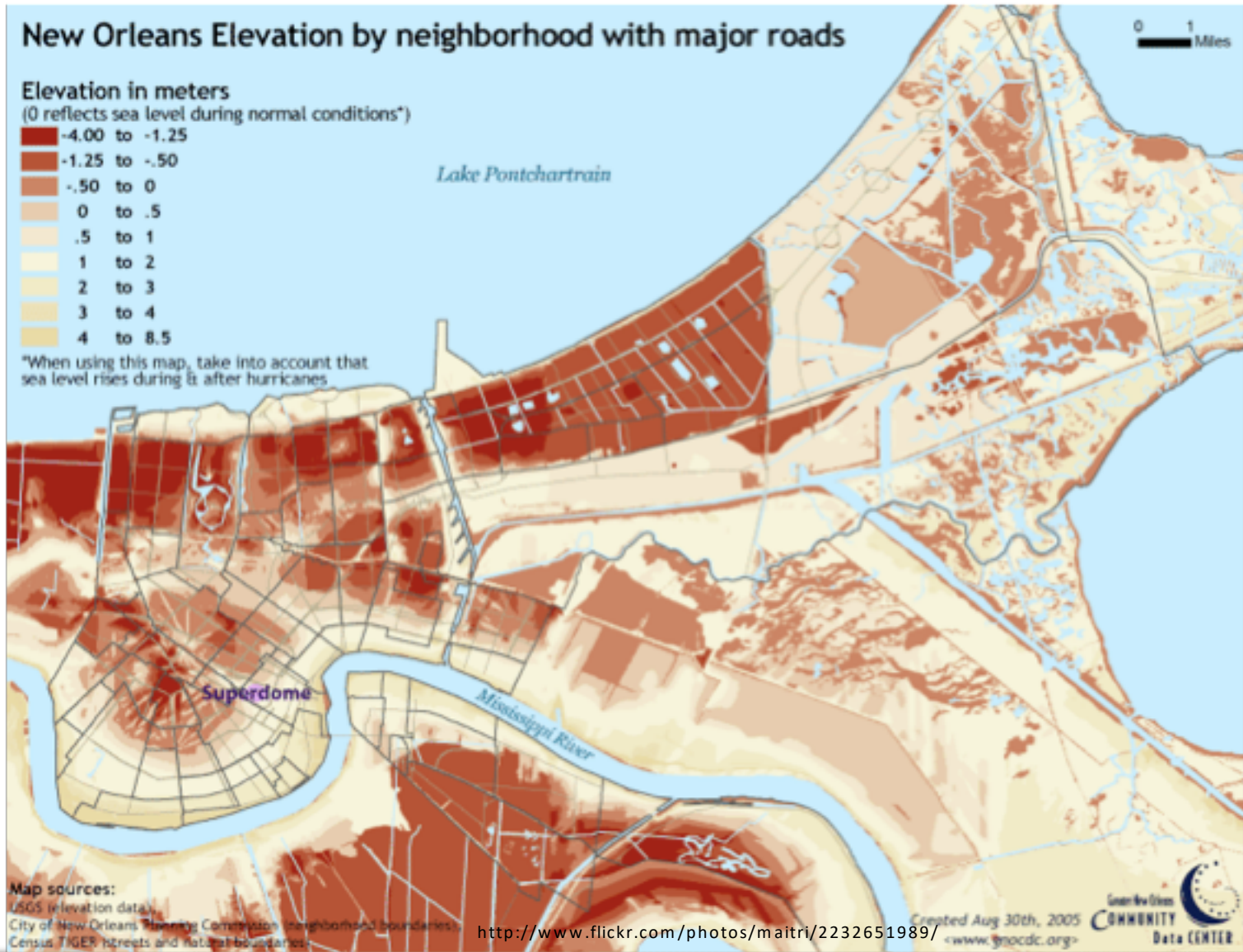
<http://www.flickr.com/photos/33470786@N03/3210709838>

# Question

- Why would people decide to build a city in an area that is below sea level? What is driving this type of land use policy?



# Elevations – New Orleans



# How is the Population density distributed?



Red – Caucasian  
Blue- African Am.  
Green – Asian  
Orange – Hispanic  
Yellow - Other

<http://www.flickr.com/photos/walkingsf/5425773046/>



# Hurricanes and New Orleans



[http://commons.wikimedia.org/wiki/File:Hurricanes\\_Category\\_3\\_or\\_greater\\_within\\_100\\_miles\\_of\\_New\\_Orleans.jpg](http://commons.wikimedia.org/wiki/File:Hurricanes_Category_3_or_greater_within_100_miles_of_New_Orleans.jpg)