



Digital Commons@

Loyola Marymount University
LMU Loyola Law School

Module 02: Land Use

Urban EcoLab

April 2021

New Orleans Elevation Handout

Center for Urban Resilience

Follow this and additional works at: <https://digitalcommons.lmu.edu/urbanecolab-module02>



Part of the [Ecology and Evolutionary Biology Commons](#), [Environmental Education Commons](#), [Sustainability Commons](#), and the [Urban Studies and Planning Commons](#)

Repository Citation

Center for Urban Resilience, "New Orleans Elevation Handout" (2021). *Module 02: Land Use*. 30. <https://digitalcommons.lmu.edu/urbanecolab-module02/30>

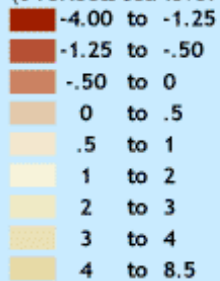
This Lesson 2: Biophysical and Social Drivers is brought to you for free and open access by the Urban EcoLab at Digital Commons @ Loyola Marymount University and Loyola Law School. It has been accepted for inclusion in Module 02: Land Use by an authorized administrator of Digital Commons@Loyola Marymount University and Loyola Law School. For more information, please contact digitalcommons@lmu.edu.

New Orleans Elevation by neighborhood with major roads

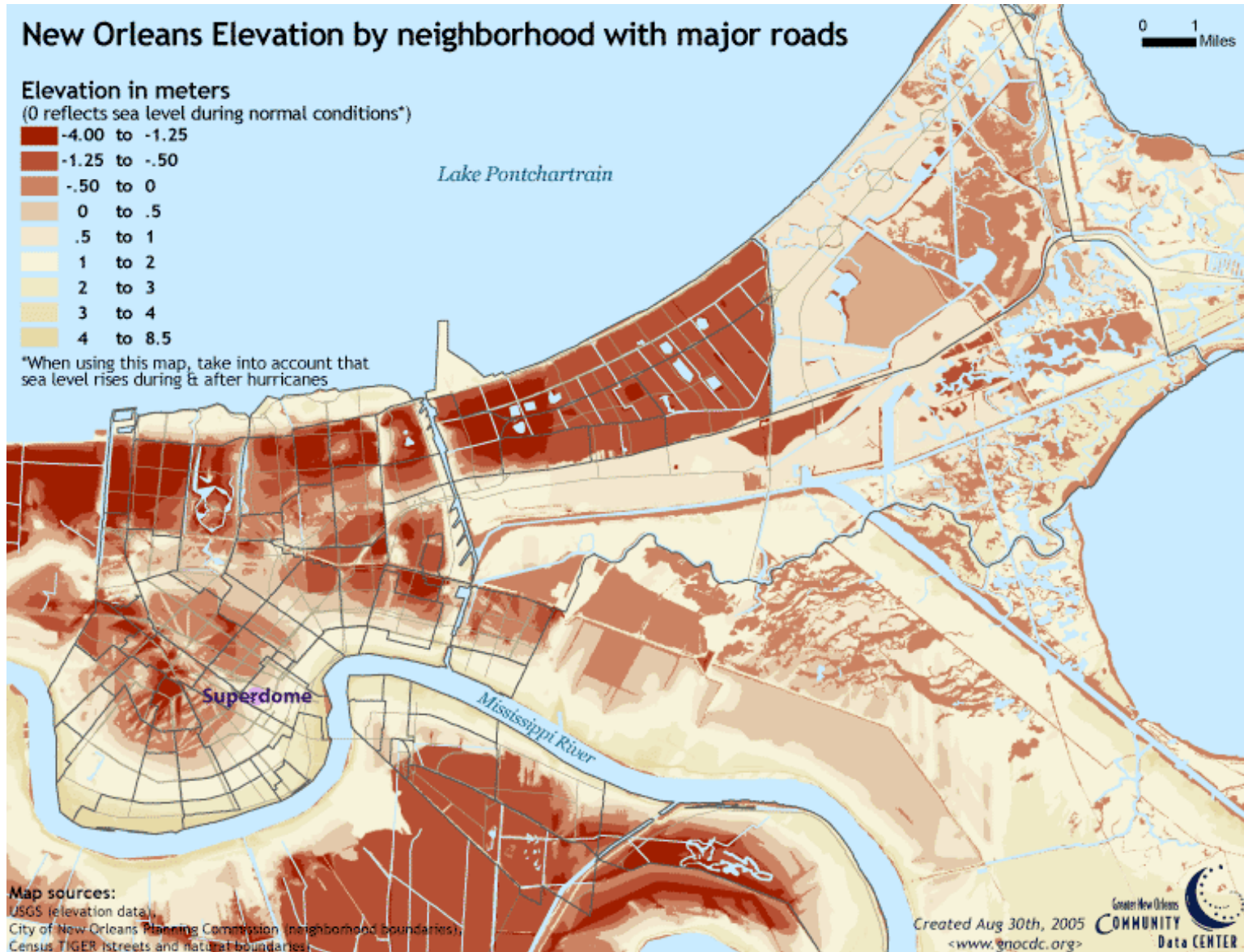
0 1 Miles

Elevation in meters

(0 reflects sea level during normal conditions*)



*When using this map, take into account that sea level rises during & after hurricanes



Map sources:

USGS (elevation data),
City of New Orleans Planning Commission (neighborhood boundaries),
Census TIGER (streets and natural boundaries)

Created Aug 30th, 2005
<www.gnocdc.org>



<http://www.flickr.com/photos/maitri/2232651989/>