



Digital Commons@

Loyola Marymount University
LMU Loyola Law School

Communication Studies Student Works

Communication Studies

Spring 2016

Survivor Scheibel Edition

Joseph Harold Cahn

Loyola Marymount University, jcahn@lion.lmu.edu

Follow this and additional works at: https://digitalcommons.lmu.edu/commstudies_students



Part of the [Communication Commons](#)

Repository Citation

Cahn, Joseph Harold, "Survivor Scheibel Edition" (2016). *Communication Studies Student Works*. 14.
https://digitalcommons.lmu.edu/commstudies_students/14

This Comic is brought to you for free and open access by the Communication Studies at Digital Commons @ Loyola Marymount University and Loyola Law School. It has been accepted for inclusion in Communication Studies Student Works by an authorized administrator of Digital Commons@Loyola Marymount University and Loyola Law School. For more information, please contact digitalcommons@lmu.edu.

SURVIVOR

SCHEIBEL EDITION

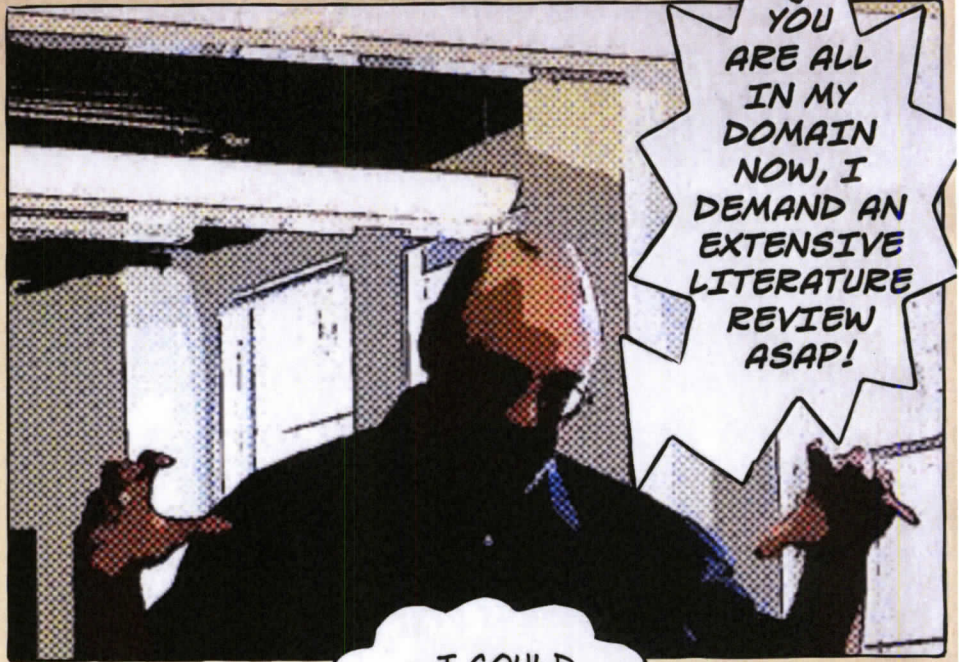


BY JOEY CAHN

IT WAS THE FIRST DAY OF THE SEMESTER WHEN I MET DEAN---



HE WAS... ERM... "WELCOMING"



YOU ARE ALL IN MY DOMAIN NOW, I DEMAND AN EXTENSIVE LITERATURE REVIEW ASAP!

...I COULD TALK ABOUT POP MUSIC! EH, MAYBE NOT



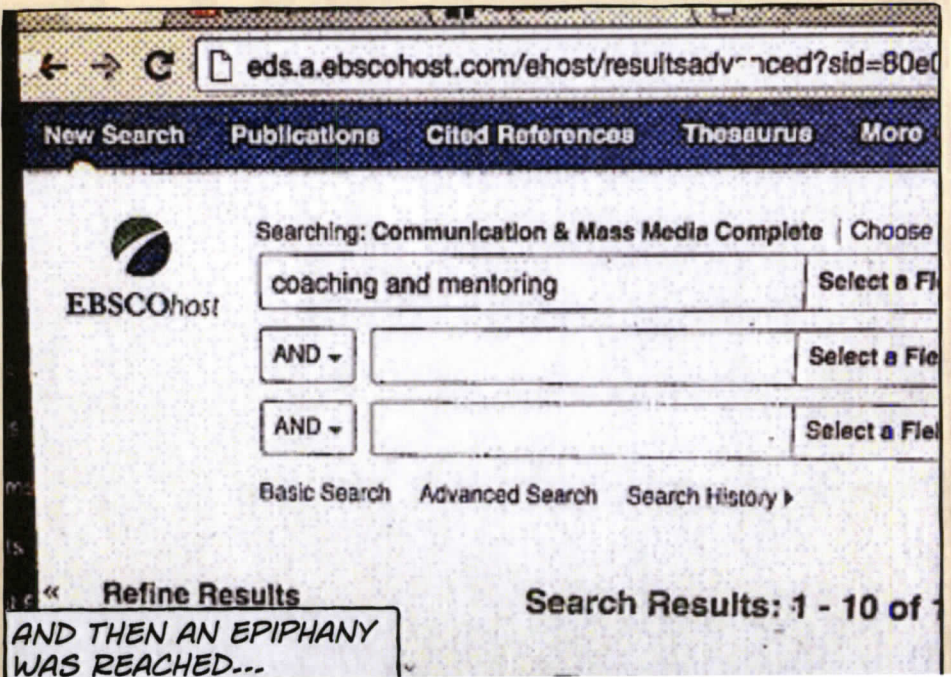
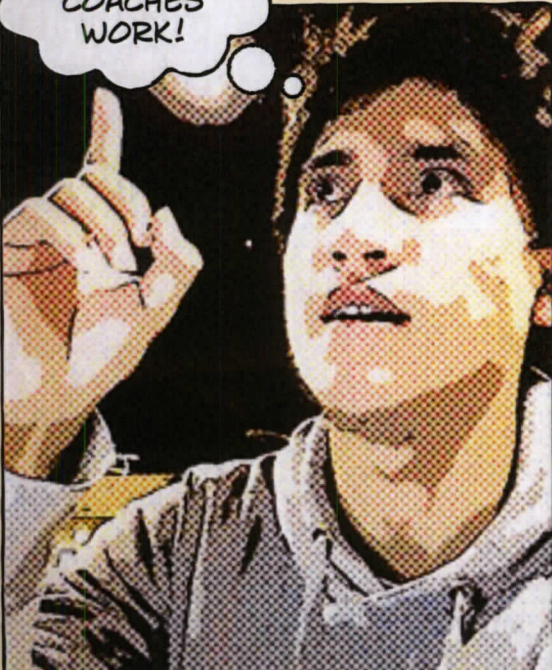
OH SHIT... THAT'S A LOT OF WRITING

SCREAMS INTERNALLY



WITH A NEW CHALLENGE PRESENTED, I TENACIOUSLY SURFED THE WEB, SEARCHING FOR THE ELUSIVE REVIEW TOPIC

WAIT, I PLAY BASEBALL, I KNOW HOW COACHES WORK!



AND THEN AN EPIPHANY WAS REACHED...

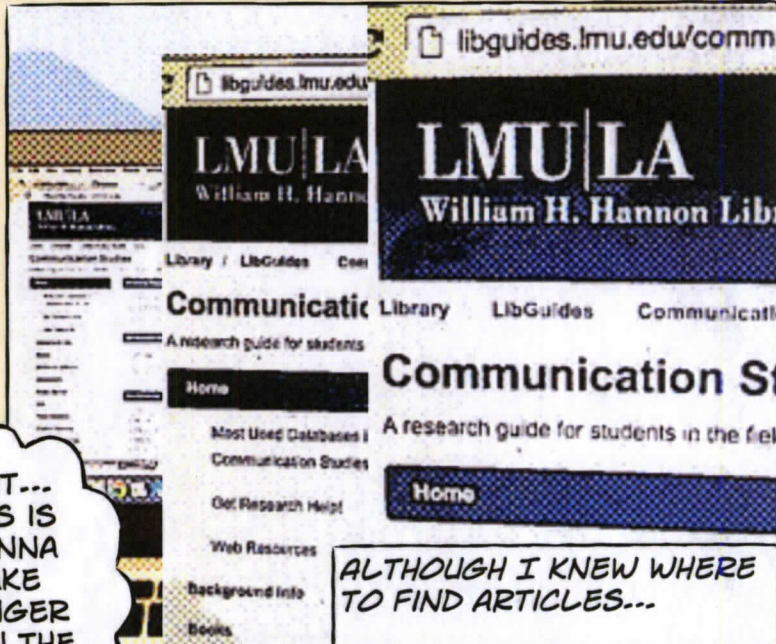
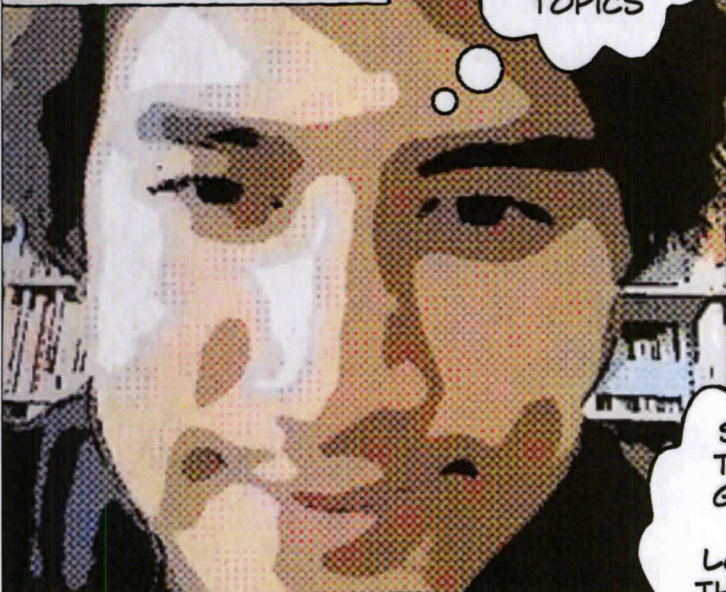
---AND SO I STROVE, DETERMINED TO FIND THE BEST ARTICLES FOR MY TOPIC

LET'S GET DOWN TO BUSINESS



THESE ARTICLES WILL BE EASY-PEASY, JUST GOTTA LOOK FOR BASEBALL TOPICS

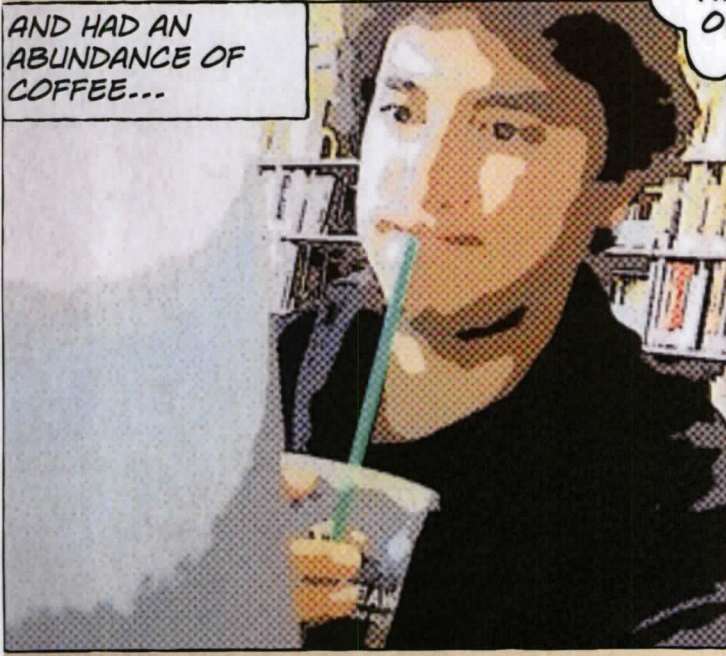
I FELT INSPIRED...



SHIT... THIS IS GONNA TAKE LONGER THAN THE AVERAGE OUTLINE

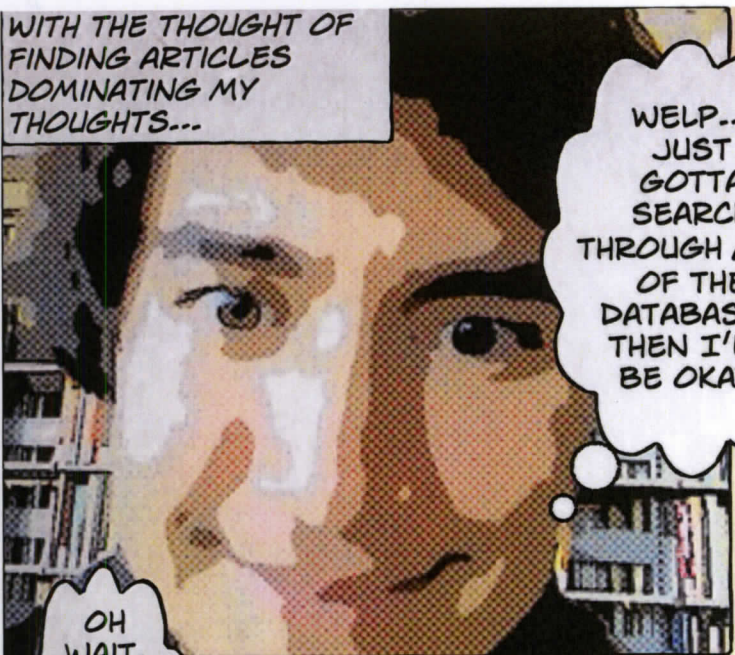
ALTHOUGH I KNEW WHERE TO FIND ARTICLES...

AND HAD AN ABUNDANCE OF COFFEE...



I SOON REALIZED...

WITH THE THOUGHT OF FINDING ARTICLES DOMINATING MY THOUGHTS...



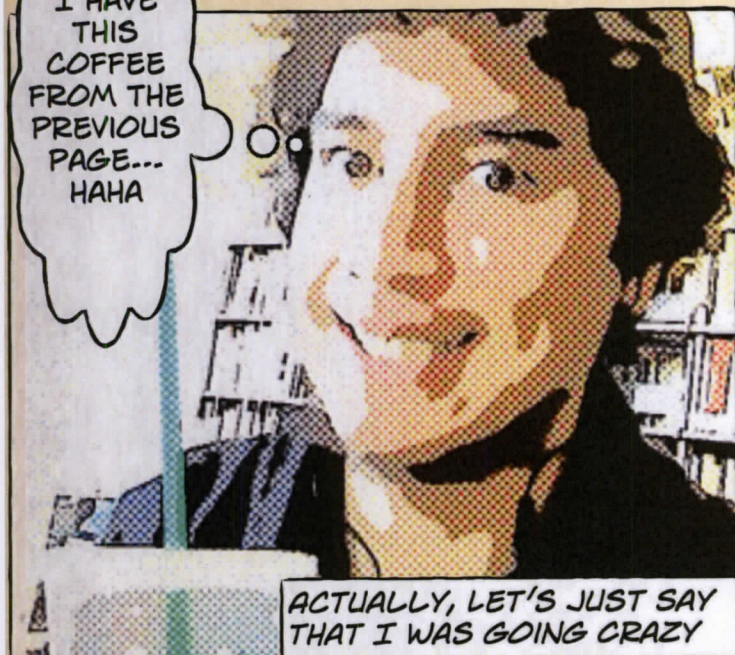
WELP... JUST GOTTA SEARCH THROUGH ALL OF THE DATABASES THEN I'LL BE OKAY!



THIS CALLS FOR MORE COFFEE

I STARTED TO GET A TAD BIT ANTSY

OH WAIT, I HAVE THIS COFFEE FROM THE PREVIOUS PAGE... HAHA



ACTUALLY, LET'S JUST SAY THAT I WAS GOING CRAZY



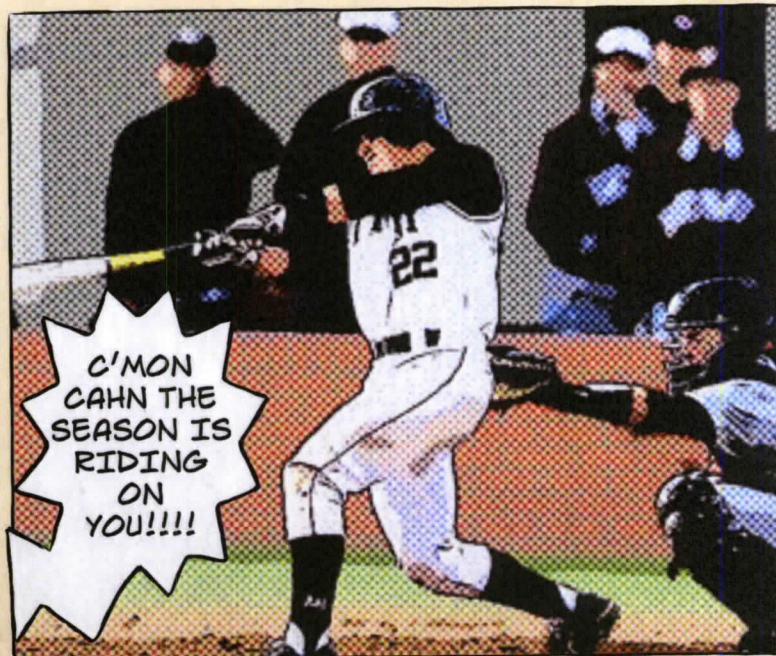
OKAY OKAY, JUST FOCUS ON BASEBALL

CAHN...

CAHN...

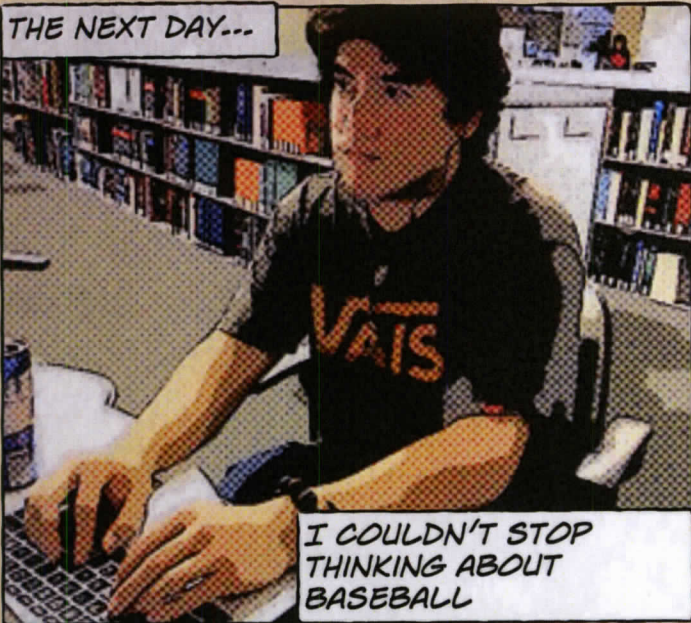
CAHN!

CAHN!!!!

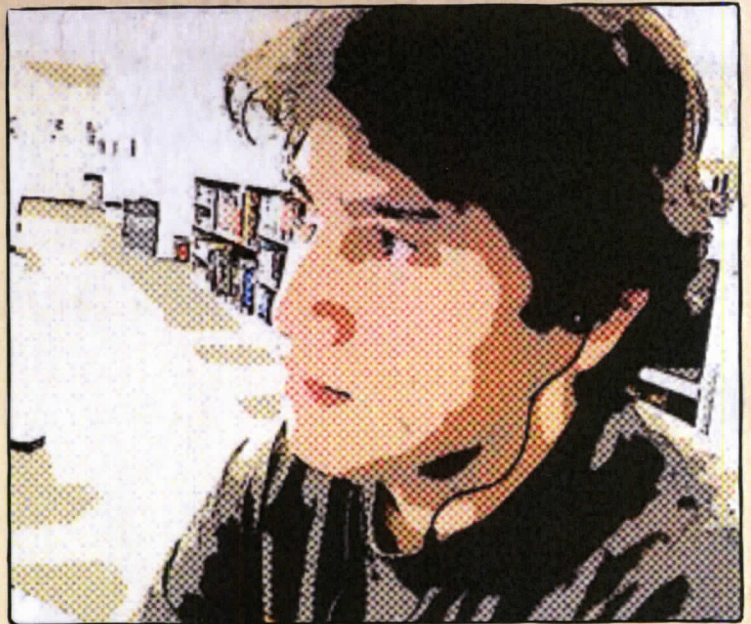


C'MON CAHN THE SEASON IS RIDING ON YOU!!!!

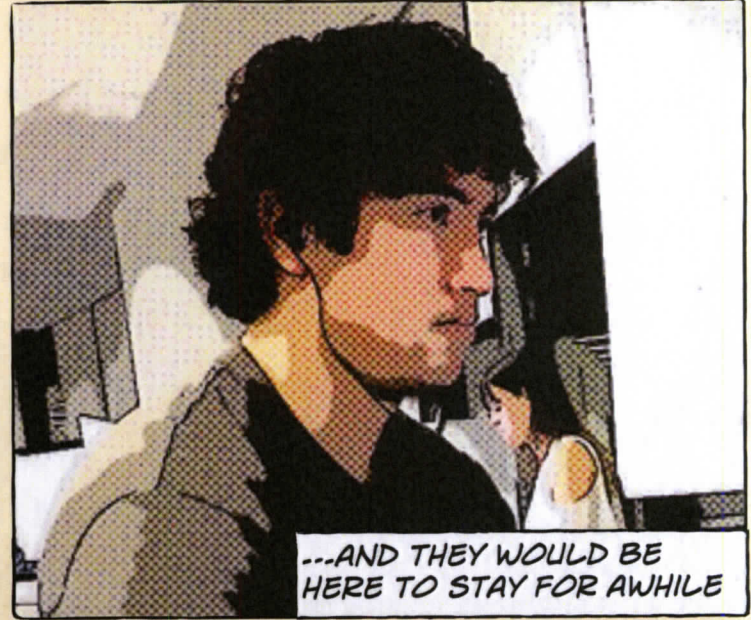
THE NEXT DAY...



I COULDN'T STOP THINKING ABOUT BASEBALL



THE DEMONS FROM MY HIGH SCHOOL BASEBALL EXPERIENCE CAME FLOODING BACK



...AND THEY WOULD BE HERE TO STAY FOR AWHILE

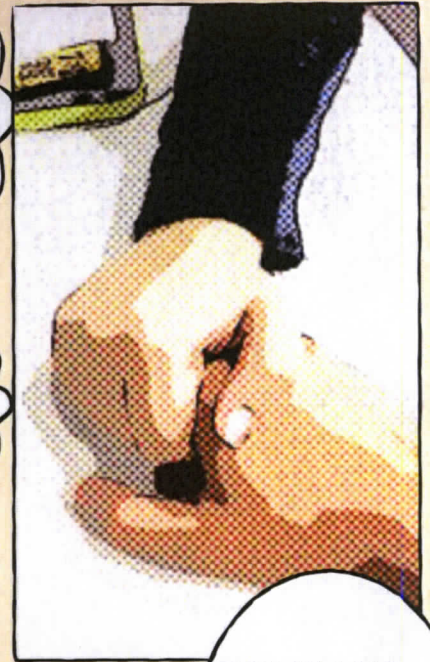
SOME THINGS JUST STICK WITH YOU...IN THIS CASE, IT WAS EVERYTHING FROM THAT EXPERIENCE



MY COACH DID USE HIS POWER RATHER NEGATIVELY WITH MY TEAM

WOW, IT REALLY DID AFFECT HOW I PLAYED

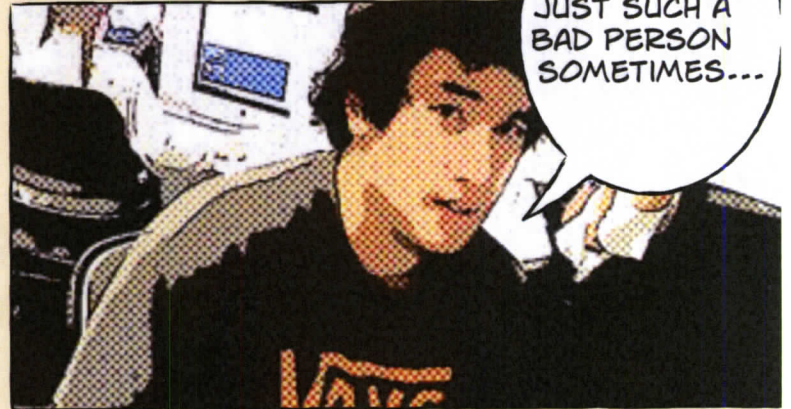
HEY HANDSOME, IS EVERYTHING OKAY?



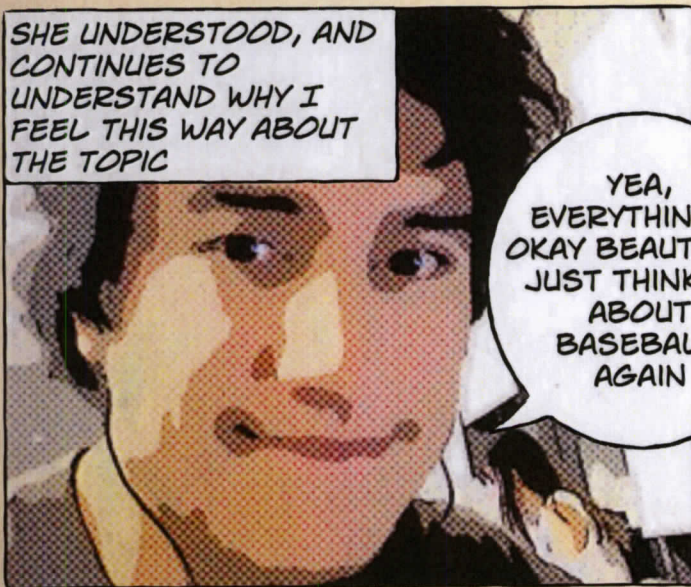
COACH WAS JUST SUCH A BAD PERSON SOMETIMES...



MY GIRLFRIEND, SHANNON, HAD OBSERVED THE MISERABLE TIMES I HAD DURING MY SENIOR SEASON OF HS BASEBALL



NOT JUST TO ME BUT TO OTHER PLAYERS



SHE UNDERSTOOD, AND CONTINUES TO UNDERSTAND WHY I FEEL THIS WAY ABOUT THE TOPIC

YEA, EVERYTHING'S OKAY BEAUTIFUL, JUST THINKING ABOUT BASEBALL AGAIN

AND IT SEEMED LIKE EVERYONE WAS OKAY WITH IT, AND I HAVE NO IDEA HOW TO STOP THINKING ABOUT IT

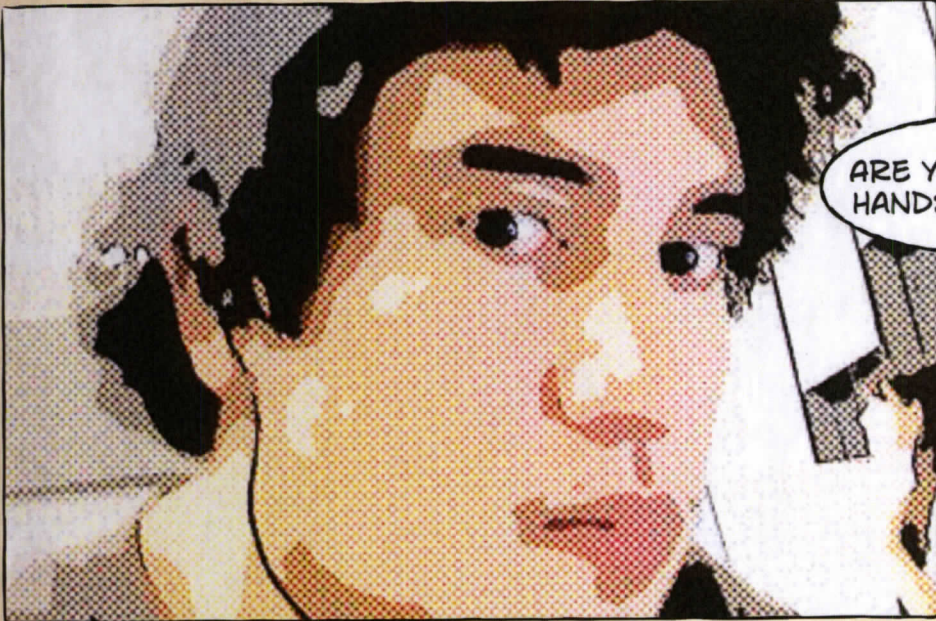




UM...WRITE ABOUT IT YOU IDIOT!



IF IT REALLY MEANS A LOT TO YOU, THEN PUT IT DOWN ON PAPER. I'M SURE THAT OTHER ATHLETES FEEL THE SAME WAY!



ARE YOU OKAY HANDSOME?



YES YOU'RE A GENIUS!!!!

Searching: **Communication & Mass**

coaching

AND ▼ **power**

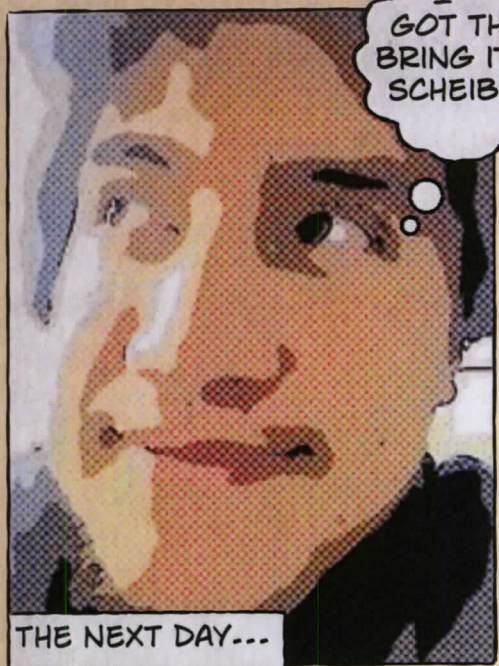
AND ▼ **authority**

Basic Search **Advanced Search**

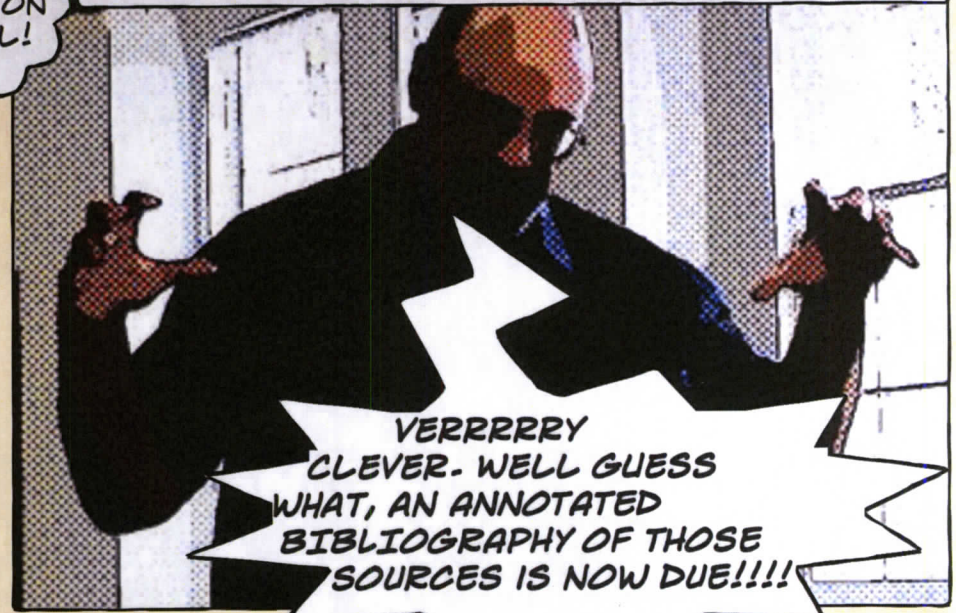
AND SO MY FOCUS WAS DISCOVERED....

GOT THIS, BRING IT ON SCHEIBEL!

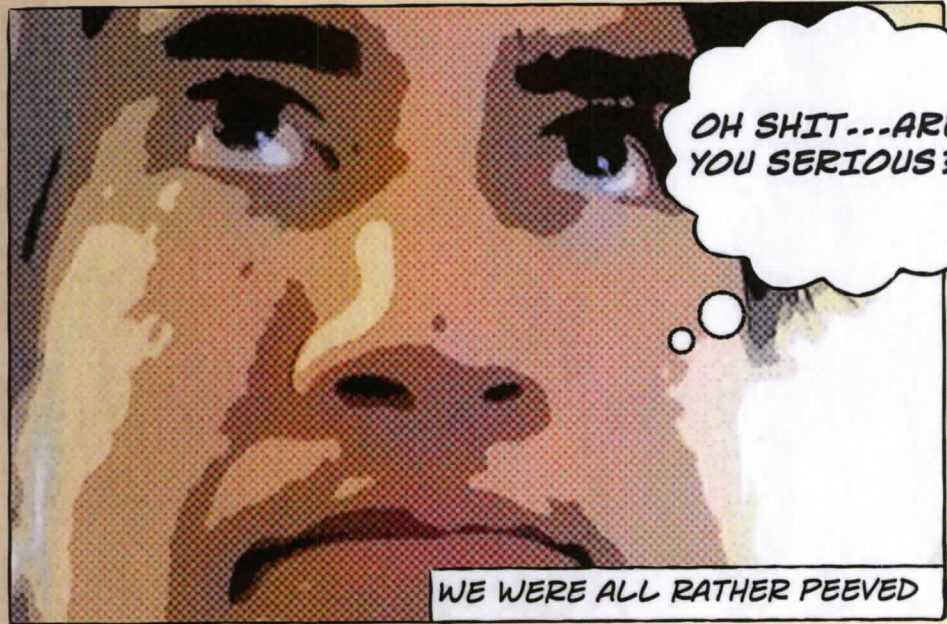
ALL THE SUDDEN DEAN SHOWED UP OUT OF NOWHERE



THE NEXT DAY...



VERRRRRY CLEVER. WELL GUESS WHAT, AN ANNOTATED BIBLIOGRAPHY OF THOSE SOURCES IS NOW DUE!!!!



OH SHIT...ARE YOU SERIOUS?!

WE WERE ALL RATHER PEEVED



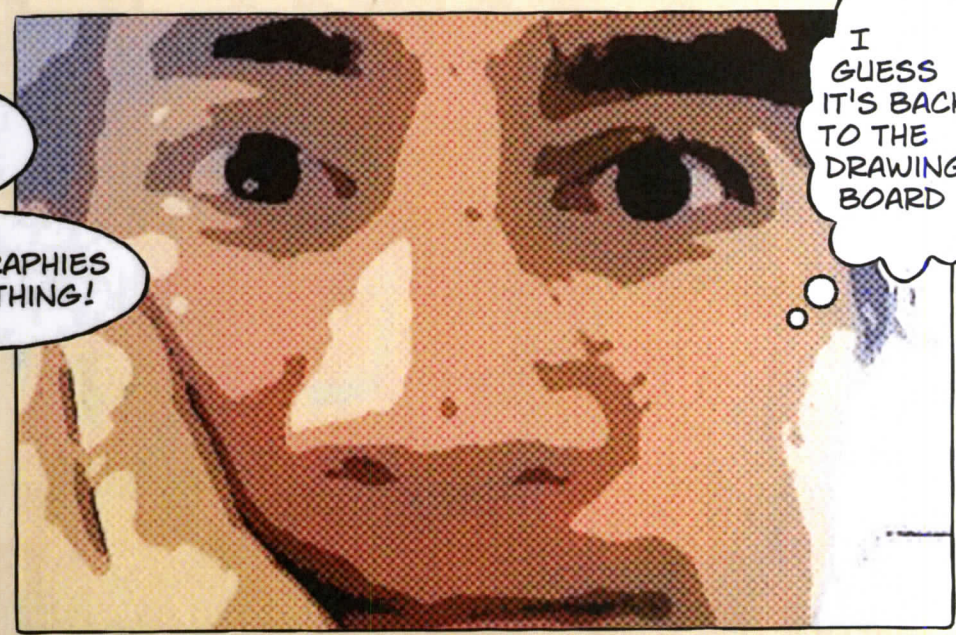
NO...I HAVE BIBLIOGRAPHOBIA!



WELL, SOME US WERE

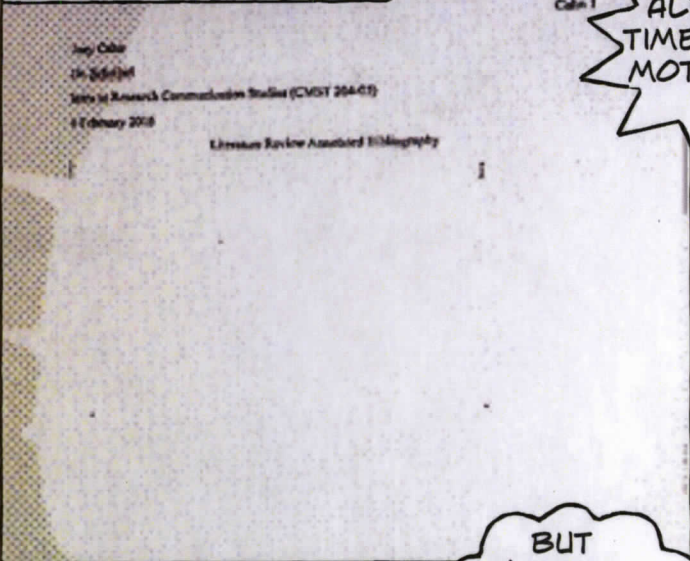
YAAAS!

BIBLIOGRAPHIES ARE MY THING!



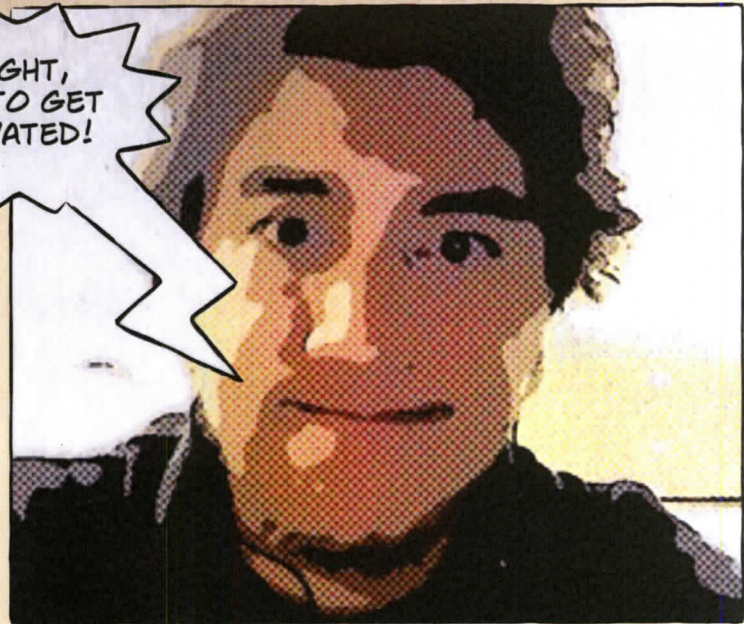
I GUESS IT'S BACK TO THE DRAWING BOARD

A FEW DAYS LATER...



Colin 1

ALRIGHT, TIME TO GET MOTIVATED!



BUT I'M SO TIRED...AND THIS LAPTOP IS SO COMFY



ZZZZZZZZZZ

PITY... ANOTHER ONE TO THE BIBLIOGRAPHY

I KNOW, HE DOES THIS ALL THE TIME!



AN HOUR LATER...



SYNTHESIZE!!!!

UPON WAKING FROM MY NAP, I REALIZED THAT I NEEDED TO APPROACH THIS ASSIGNMENT FROM A DIFFERENT ANGLE

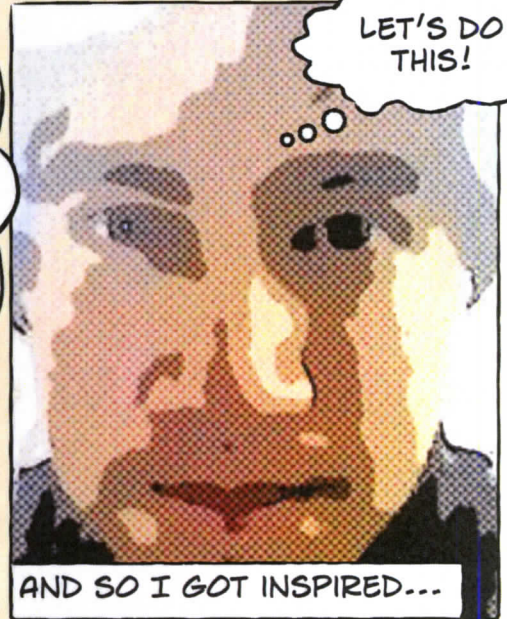
OKAY, NAPPING ISN'T WORKING. MAYBE I JUST NEED TO FOCUS ON SUMMARIZING MY SOURCES.



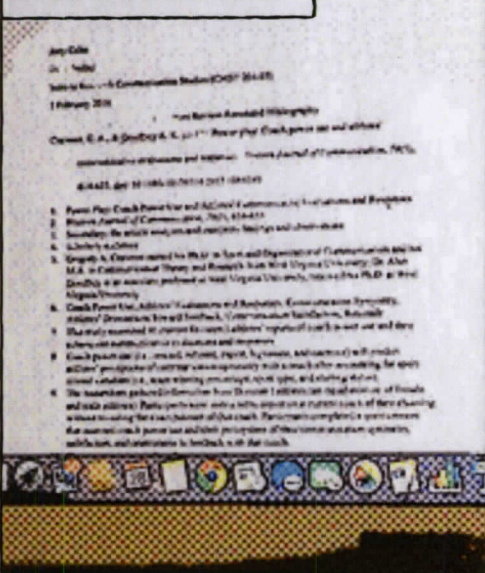
IF I SUMMARIZE WHAT EACH SOURCE SAYS WHILE PARAPHRASING... THEN I'LL FOR SURE FINISH THIS IN NO TIME!

LET'S DO THIS!

AND SO I GOT INSPIRED...



2 HOURS LATER...

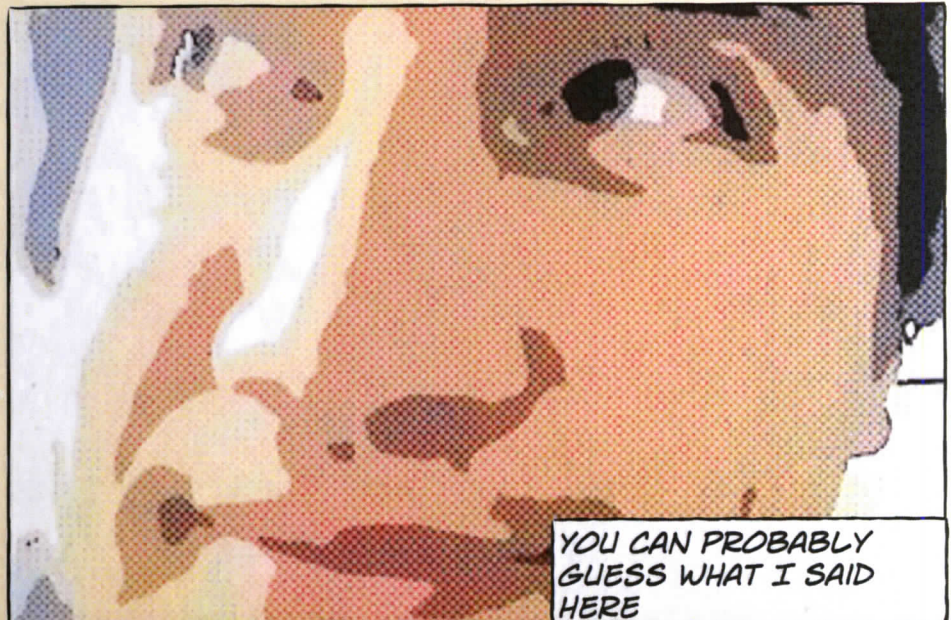
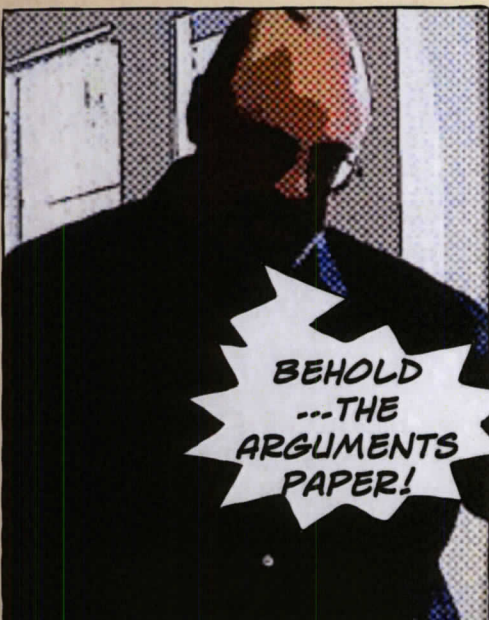
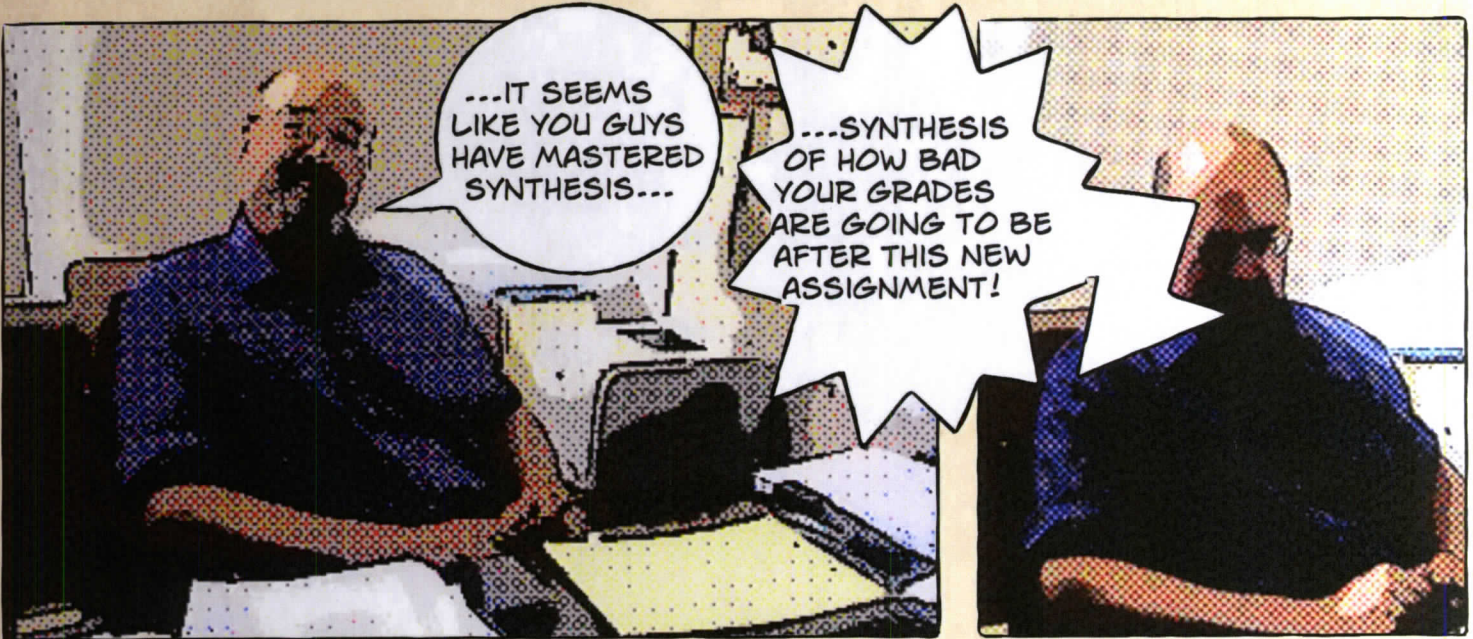
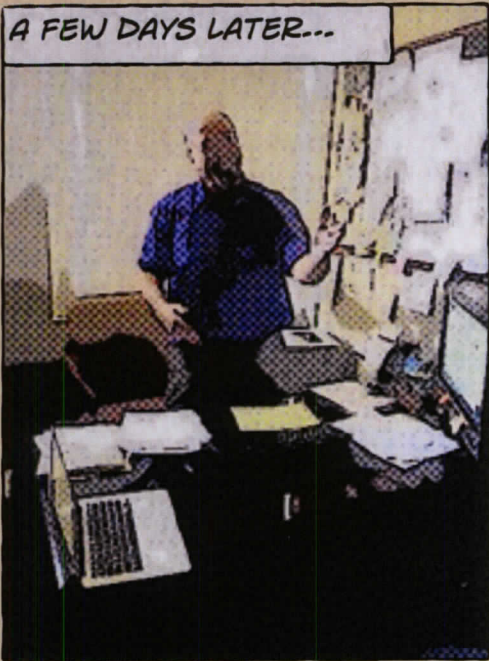


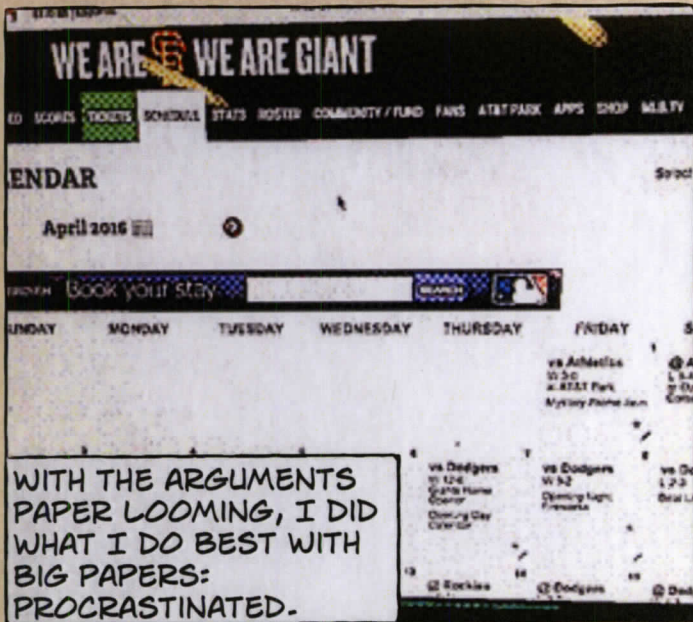
SCHEIBEL'S GONNA HAVE TO TRY HARDER TO FOOL ME!

AND HE SURE DID TRY HARDER...

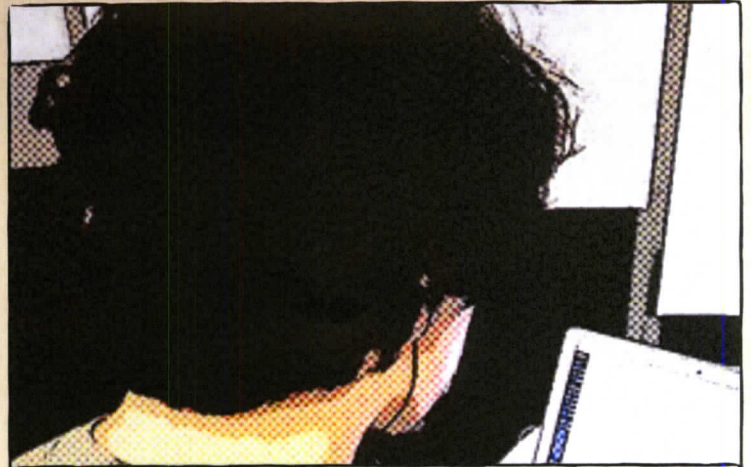


A FEW DAYS LATER...

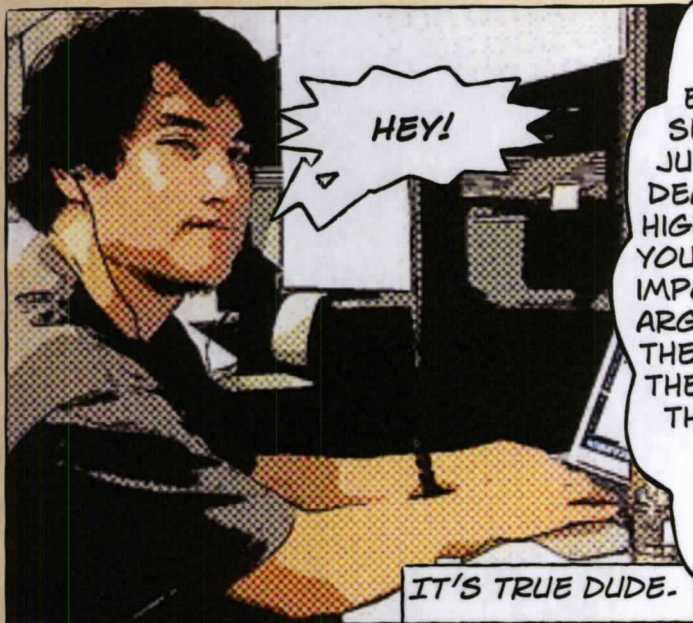




WITH THE ARGUMENTS PAPER LOOMING, I DID WHAT I DO BEST WITH BIG PAPERS: PROCRASTINATED.



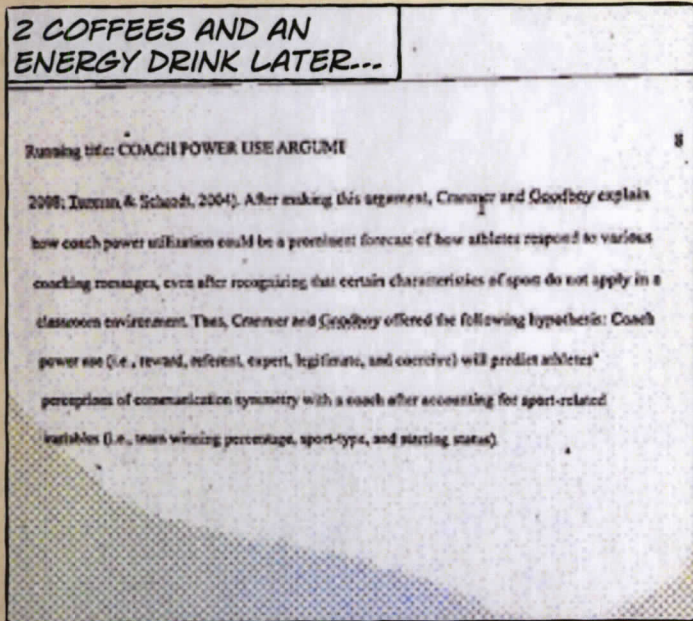
OF COURSE, THIS ONLY WORKS UNTIL IT'S THE DAY BEFORE THE PAPER IS DUE AND YOU HAVE TO DO EVERYTHING THE NIGHT BEFORE YOU HAVE TO TURN IT IN!



HEY!

ALRIGHT, ENOUGH SLACKING, JUST LIKE DEAN SAID, HIGHLIGHT WHAT YOU FEEL ARE IMPORTANT ARGUMENTS IN THE ARTICLE AND THEN INTEGRATE THEM.

IT'S TRUE DUDE.



2 COFFEES AND AN ENERGY DRINK LATER...

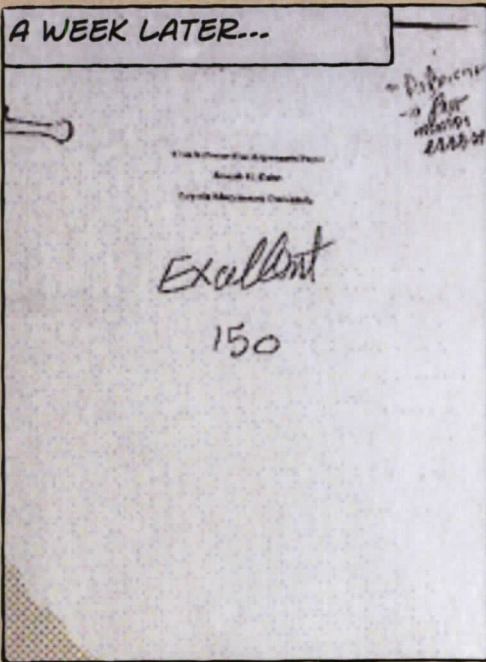
Running title: COACH POWER USE ARGUMENT

2008; Turner & Schacht, 2004). After making this argument, Cramer and Goodboy explain how coach power utilization could be a pertinent forecast of how athletes respond to various coaching messages, even after recognizing that certain characteristics of sport do not apply in a classroom environment. Thus, Cramer and Goodboy offered the following hypothesis: Coach power use (i.e., reward, referent, expert, legitimate, and coercive) will predict athletes' perceptions of communication symmetry with a coach after accounting for sport-related variables (i.e., team winning percentage, sport-type, and starting status).



SO MUCH INTEGRATION ...SO MUCH SYNTHESIS... BUT I FINISHED IT!

A WEEK LATER...



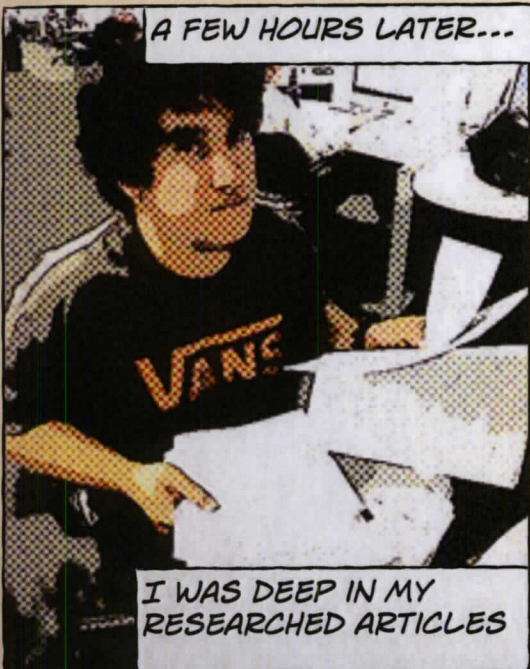
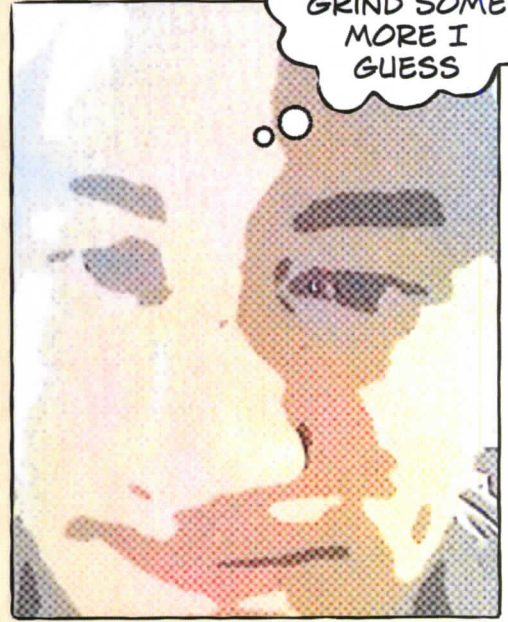
HOW ARE YOU GUYS SO GOOD AT THIS STUFF?!

IT'S OKAY... YOU GUYS ARE STILL GOING TO BE STUMPED BY THIS LITERATURE REVIEW!

WHELP, TIME TO GRIND SOME MORE I GUESS

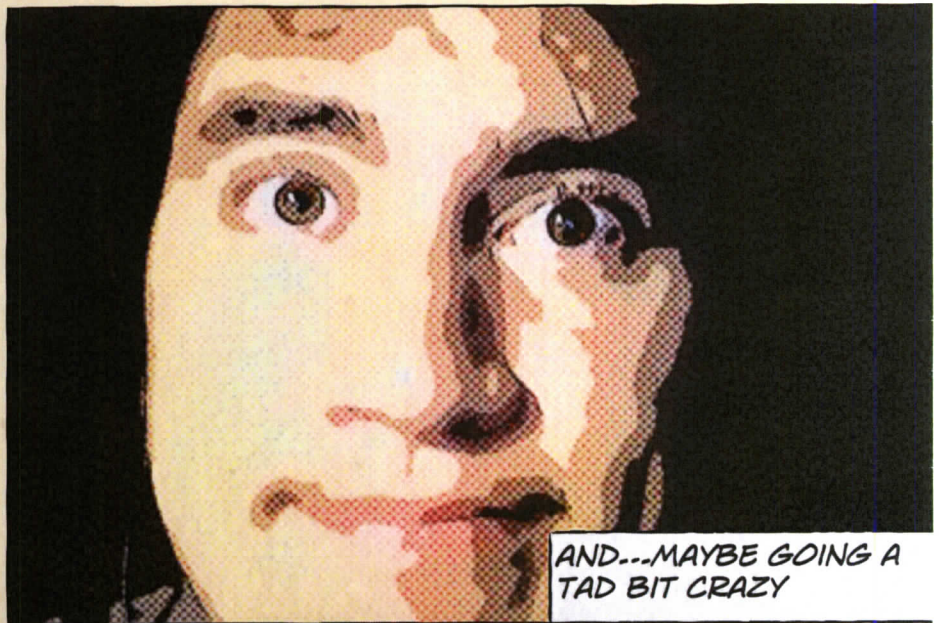


UGHHH I DON'T WANNA DO THIS LIT REVIEW!

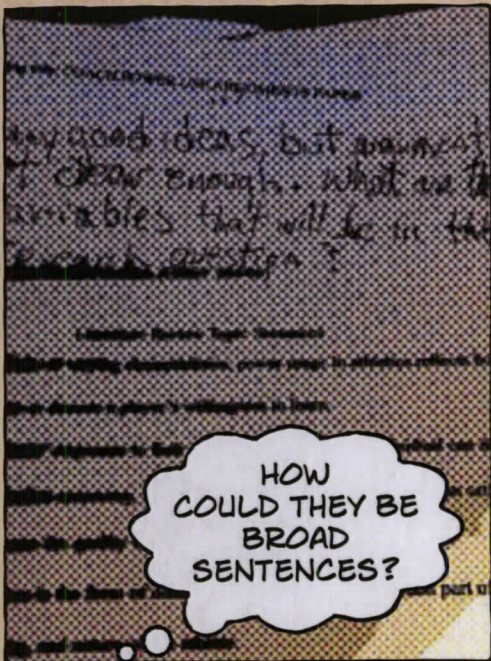


A FEW HOURS LATER...

I WAS DEEP IN MY RESEARCHED ARTICLES



AND...MAYBE GOING A TAD BIT CRAZY

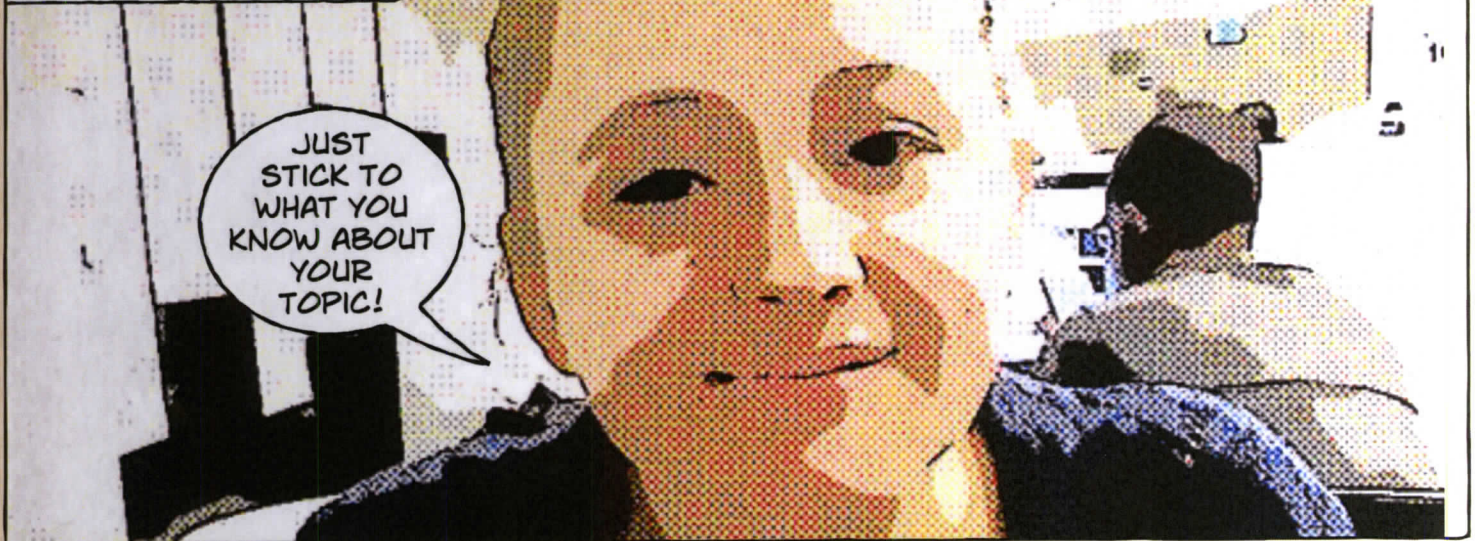


HOW
COULD THEY BE
BROAD
SENTENCES?



I THOUGHT
I HAD
SYNTHESIZED
THESE
CORRECTLY!

I THEN REMEMBERED...



JUST
STICK TO
WHAT YOU
KNOW ABOUT
YOUR
TOPIC!



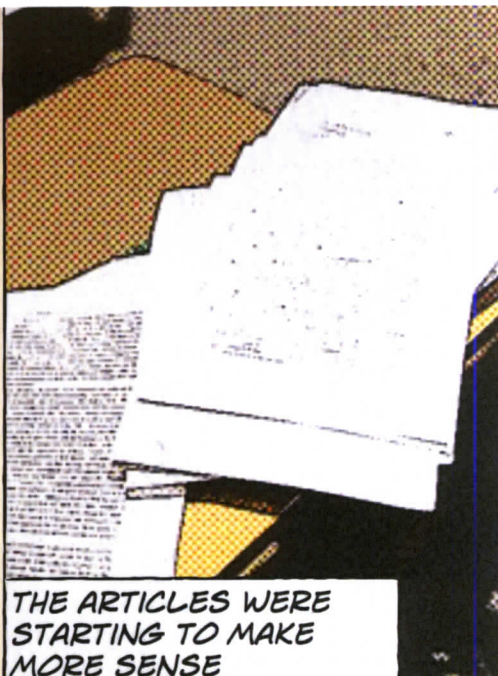
SHE'S SO
RIGHT

I JUST HAVE TO
FOCUS ON THE
DETAILS OF MY
TOPIC RATHER THAN
STATING
OVERARCHING
SENTENCES



AND ONCE AGAIN, I
FELT DETERMINED...

ONE WEEK LATER



THE ARTICLES WERE STARTING TO MAKE MORE SENSE

coach's competence to teach them, the more willing they will be to learn from them. Legitimate power overviews the admiration and respect that athletes feel in response to a coach's actual position as a figure of authority. For instance, an athlete may trust a certain coach more if they are (or appear to be) more qualified as a leader. Finally, coercive power reflects the negative side of coaching, where athletes perceive their coaches as individuals with the power to punish them psychologically, socially, or tangibly (Richmond & McCroskey, 1992).

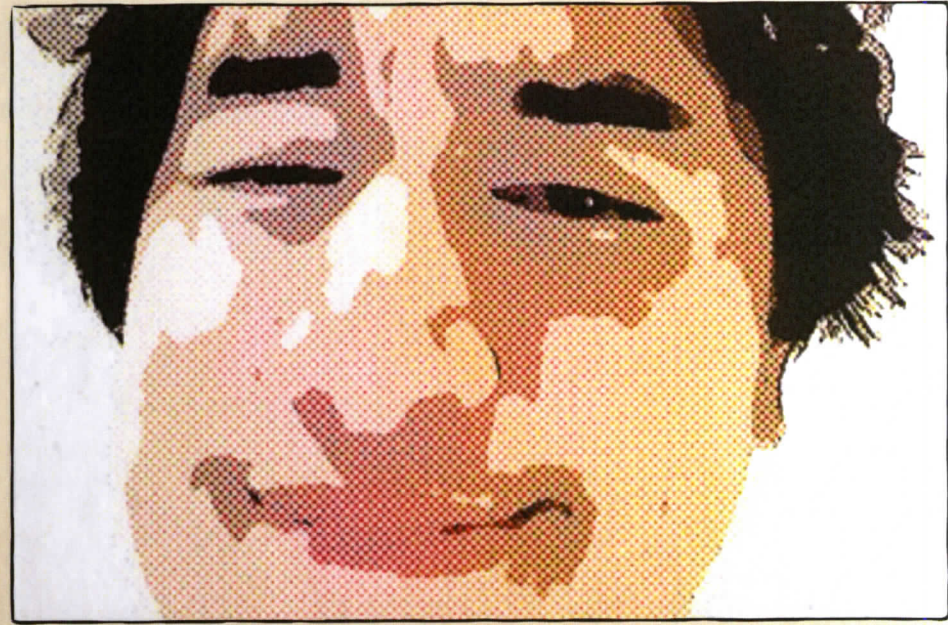
I WAS FINALLY STARTING TO GET THE HANG OF STATING WHAT I WANTED TO TALK ABOUT, WHILE INTEGRATING MY SOURCES

Drawing similarities between a classroom and athletic setting, Crutner and Goodboy of power are apparent in all instructional environments. is relative to both sport and classroom settings, setting can allow theorists to gain knowledge about the environment. Power is directly connected to students' Richmond, & McCroskey, 1984, 1985; McCroskey.

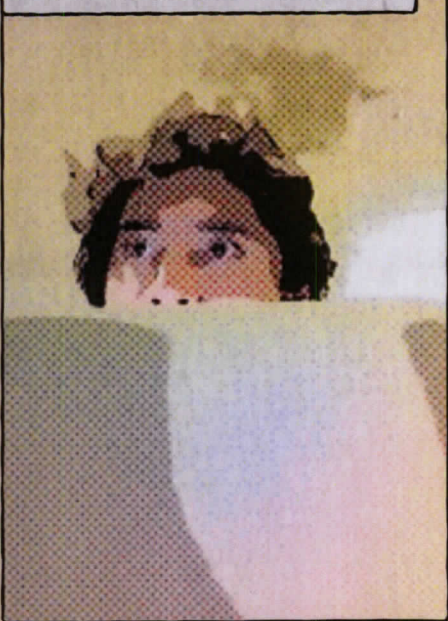
I FELT PRETTY GOOD ABOUT MY PROGRESS



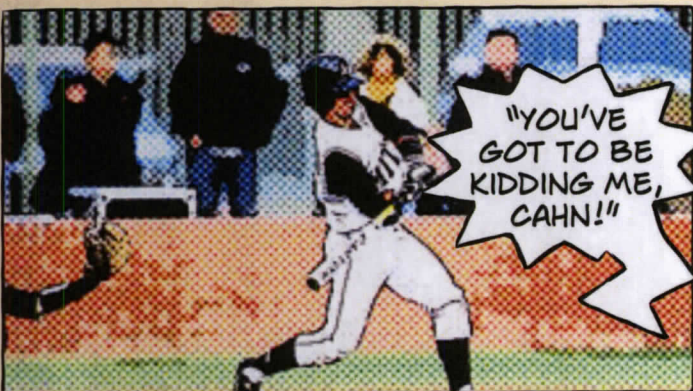
ERM...ALSO REALLY TIRED AND EXHAUSTED



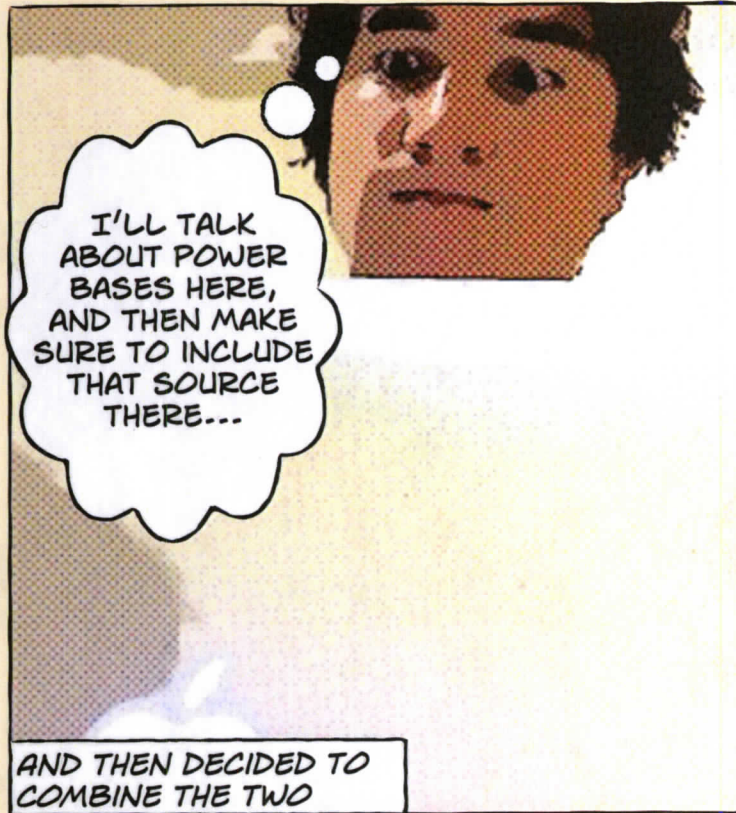
BUT I COULDN'T GIVE UP



I REMEMBERED MY EXPERIENCES FROM BASEBALL...



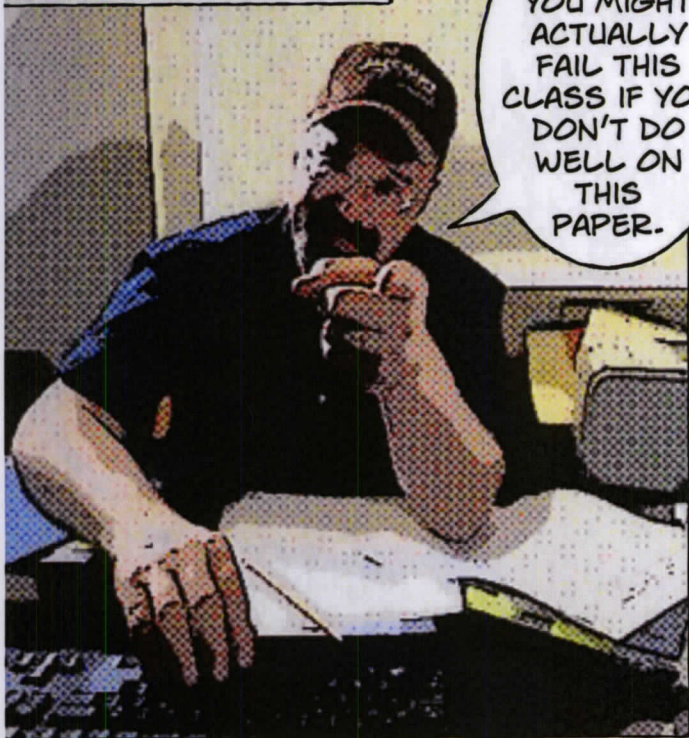
"YOU'VE GOT TO BE KIDDING ME, CAHN!"



I'LL TALK ABOUT POWER BASES HERE, AND THEN MAKE SURE TO INCLUDE THAT SOURCE THERE...

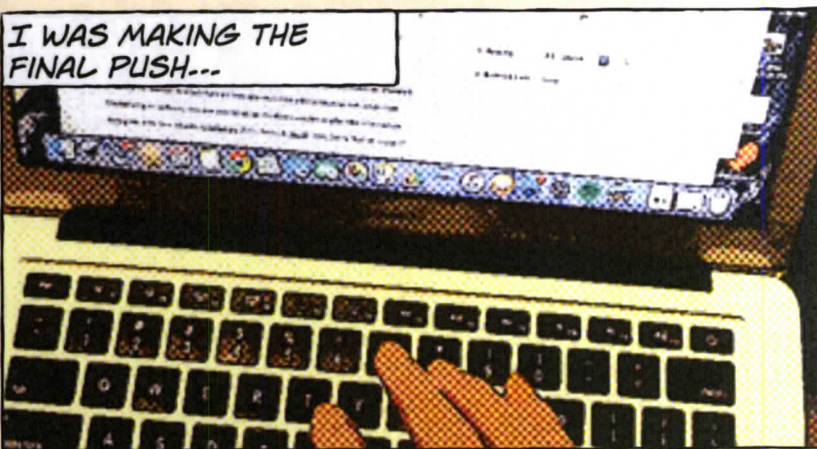
AND THEN DECIDED TO COMBINE THE TWO

---AS WELL AS DEAN'S HELPFUL ADVICE

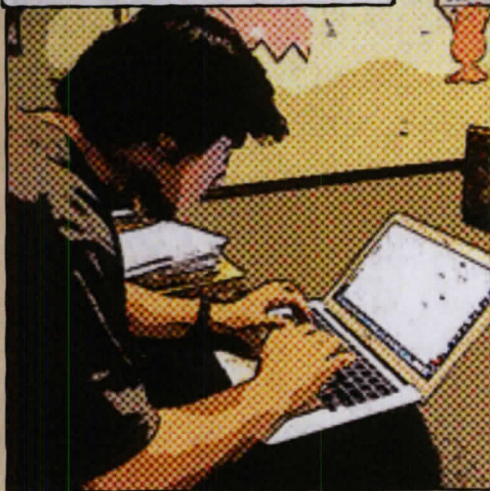


YOU KNOW, YOU MIGHT ACTUALLY FAIL THIS CLASS IF YOU DON'T DO WELL ON THIS PAPER.

I WAS MAKING THE FINAL PUSH...



EVERYTHING THAT I WAS WORKING FOR IN THAT CLASS THE ENTIRE SEMESTER LED UP TO THIS PAPER...



AND WITH DEAN'S BORDERLINE TERRIFYING MOTIVATION...



DO I REALLY HAVE TO TELL YOU WHAT I SAID IN THE PREVIOUS COMIC PAGE?

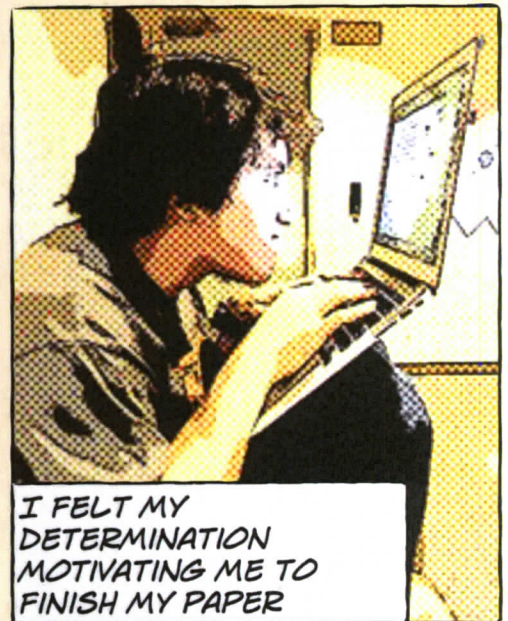
YOU MIGHT FAIL.

...AS WELL AS THE ENDURING EXPERIENCES THAT I HAD WITH MY HIGH SCHOOL BASEBALL COACH...



"HIT THE BALL, CAHN!"

I'M DEFINITELY TRYING, COACH, BUT YOU'RE NOT HELPING

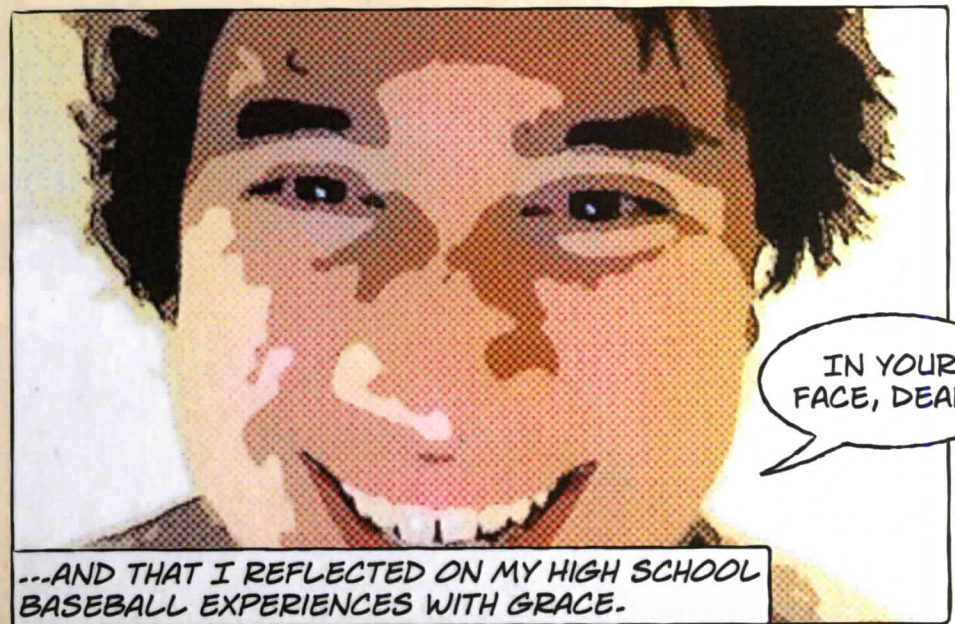


I FELT MY DETERMINATION MOTIVATING ME TO FINISH MY PAPER

AND WHEN I FINALLY FINISHED MY LITERATURE REVIEW...I WAS RATHER CONTENT...

Although seemingly minute in observation, the choices that coaches make can ultimately determine the manner in which their athletes approach their athletic training and competition. Centralizing all authority into one individual, sports allows coaches to affect the relationships they grow with their athletes (Chellabhai 2004, Smith & Small 1990, 2007). With an origin in power bases (Forsyth & Raven, 1959), the power that can be utilized by coaches seems to be, an accepted list of character traits that effectively connect the coach with the athlete. Clearly, there are many avenues that can be explored within this topic to gain a further

...CONTENT WITH THE FACT THAT I SUCCESSFULLY UTILIZED THE SKILLS THAT DEAN TAUGHT ME DURING THE SEMESTER...



IN YOUR FACE, DEAN!

...AND THAT I REFLECTED ON MY HIGH SCHOOL BASEBALL EXPERIENCES WITH GRACE.