



Digital Commons@

Loyola Marymount University
LMU Loyola Law School

Module 02: Land Use

Urban EcoLab

April 2021

Example - Dallas

Center for Urban Resilience

Follow this and additional works at: <https://digitalcommons.lmu.edu/urbanecolab-module02>



Part of the [Ecology and Evolutionary Biology Commons](#), [Environmental Education Commons](#), [Sustainability Commons](#), and the [Urban Studies and Planning Commons](#)

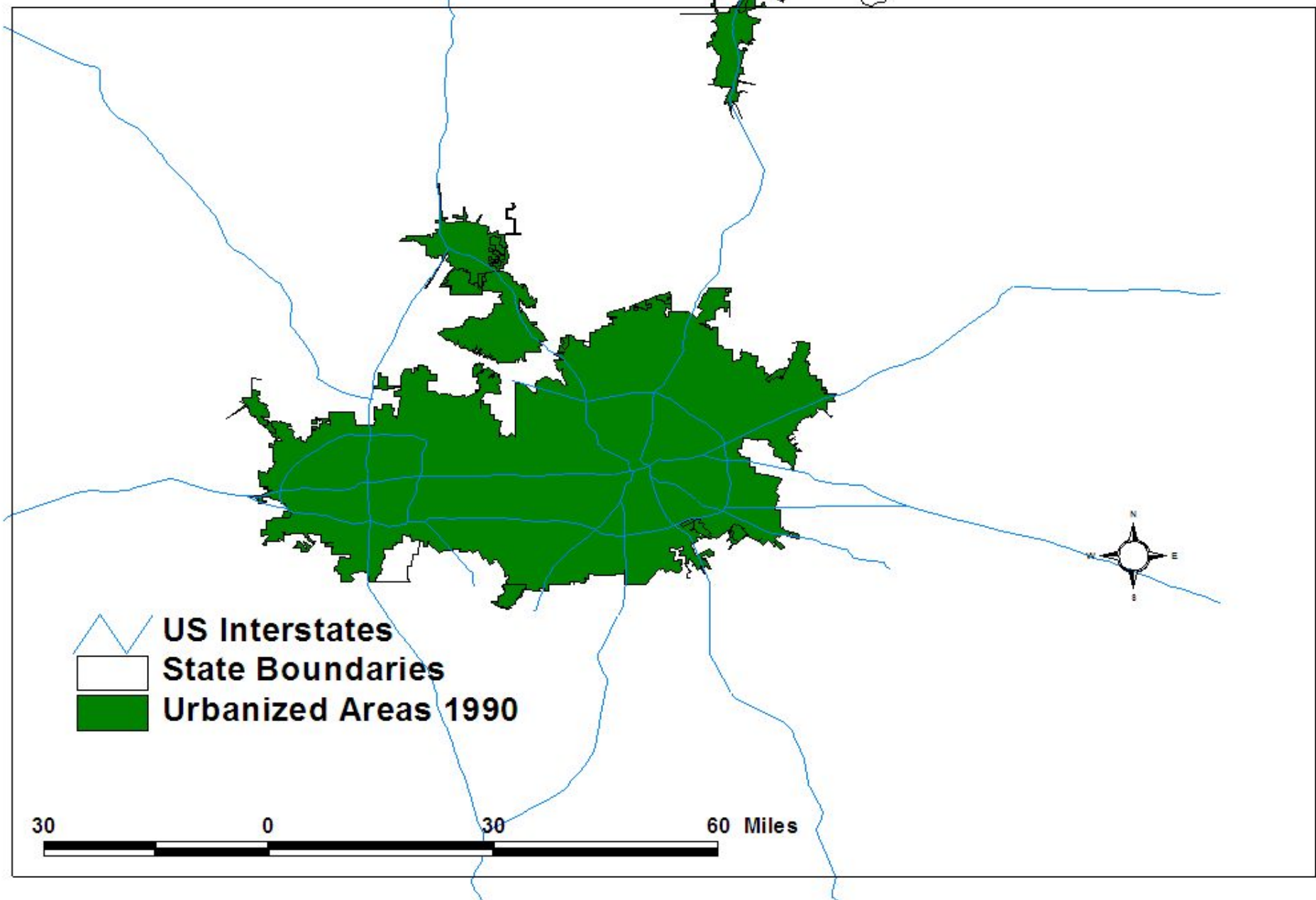
Repository Citation

Center for Urban Resilience, "Example - Dallas" (2021). *Module 02: Land Use*. 23.
<https://digitalcommons.lmu.edu/urbanecolab-module02/23>

This Lesson 3: Urban Sprawl is brought to you for free and open access by the Urban EcoLab at Digital Commons @ Loyola Marymount University and Loyola Law School. It has been accepted for inclusion in Module 02: Land Use by an authorized administrator of Digital Commons@Loyola Marymount University and Loyola Law School. For more information, please contact digitalcommons@lmu.edu.

Dallas and Urban Sprawl

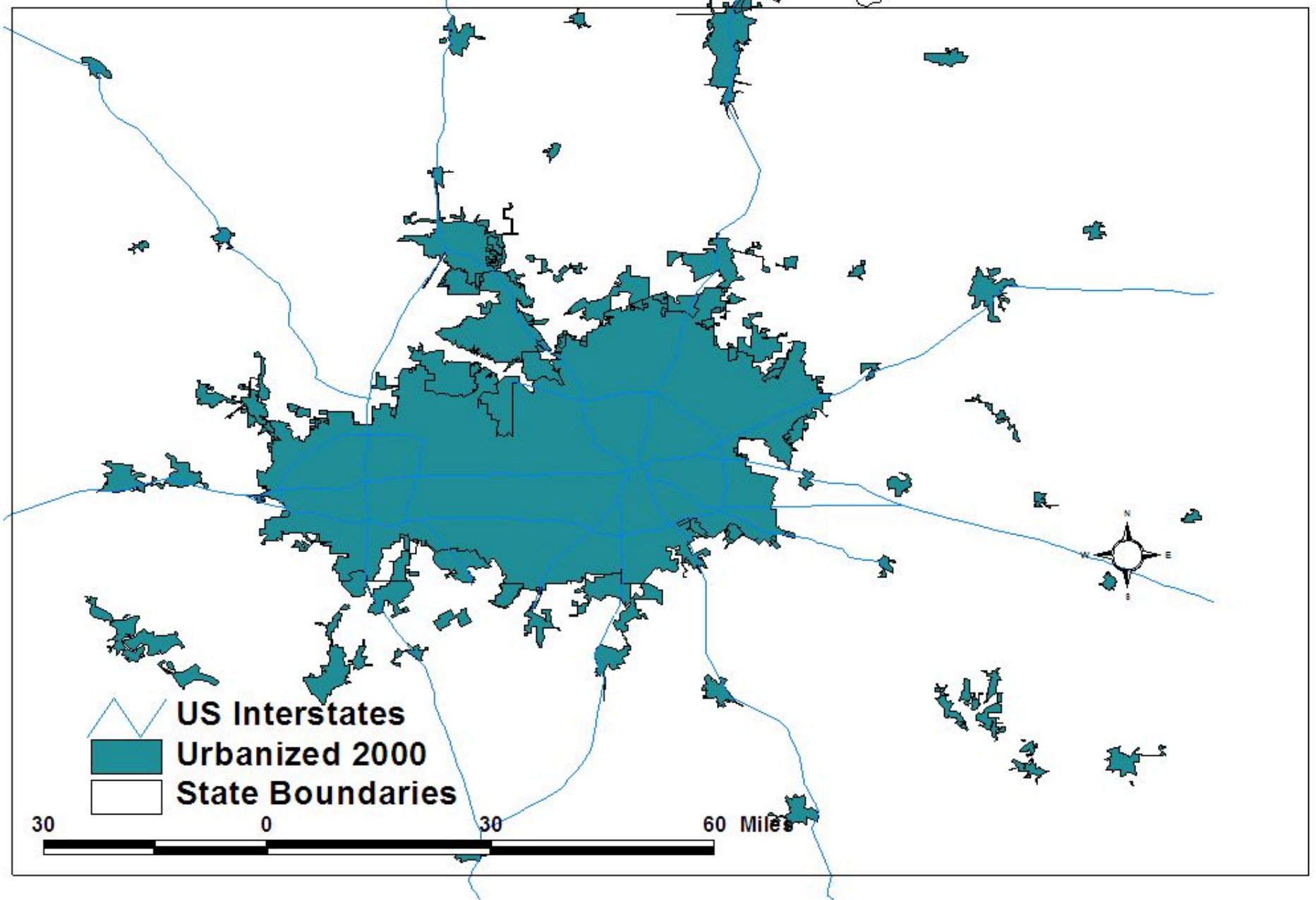
Dallas Urbanized Area 1990



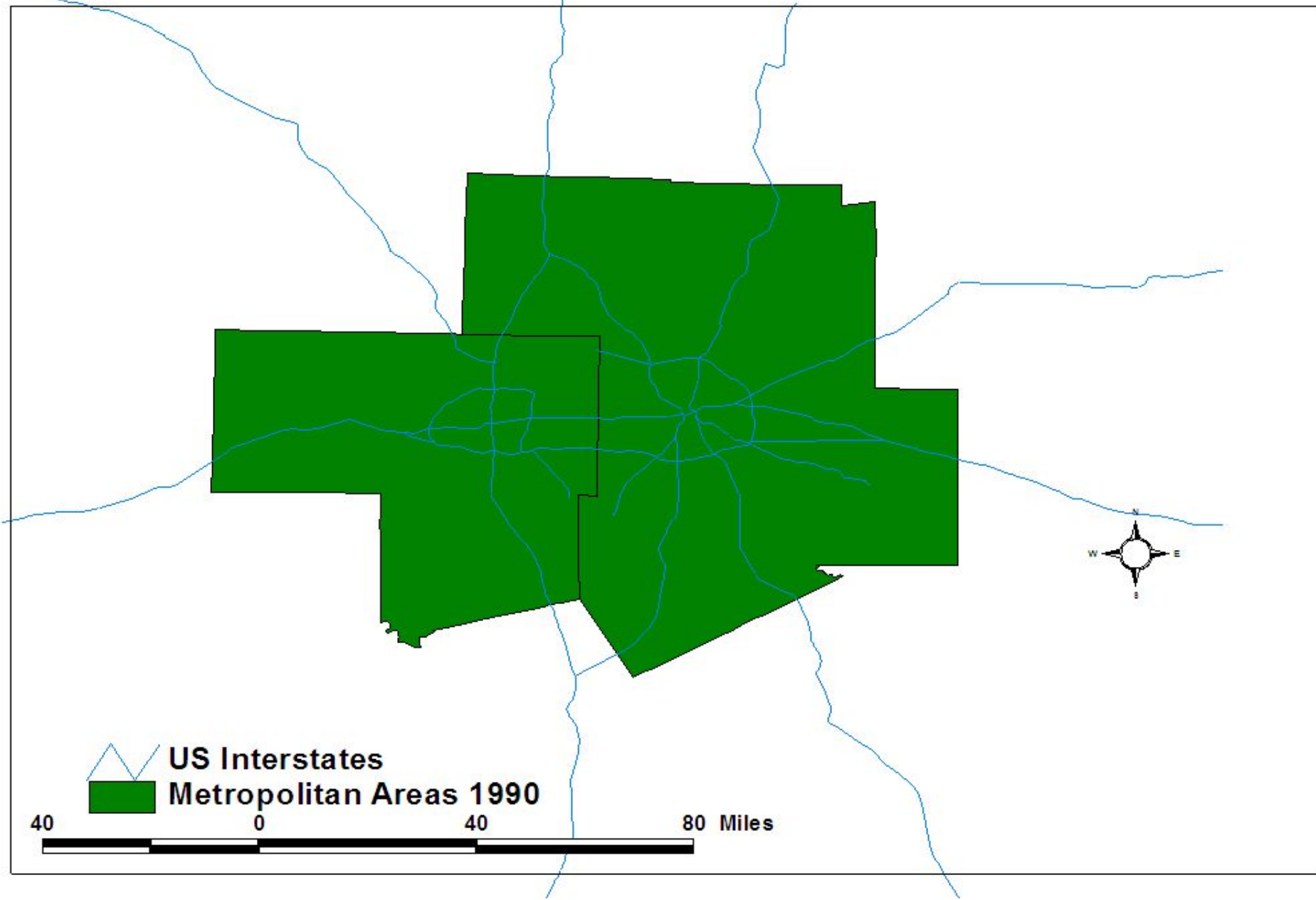
-  US Interstates
-  State Boundaries
-  Urbanized Areas 1990

30 0 30 60 Miles

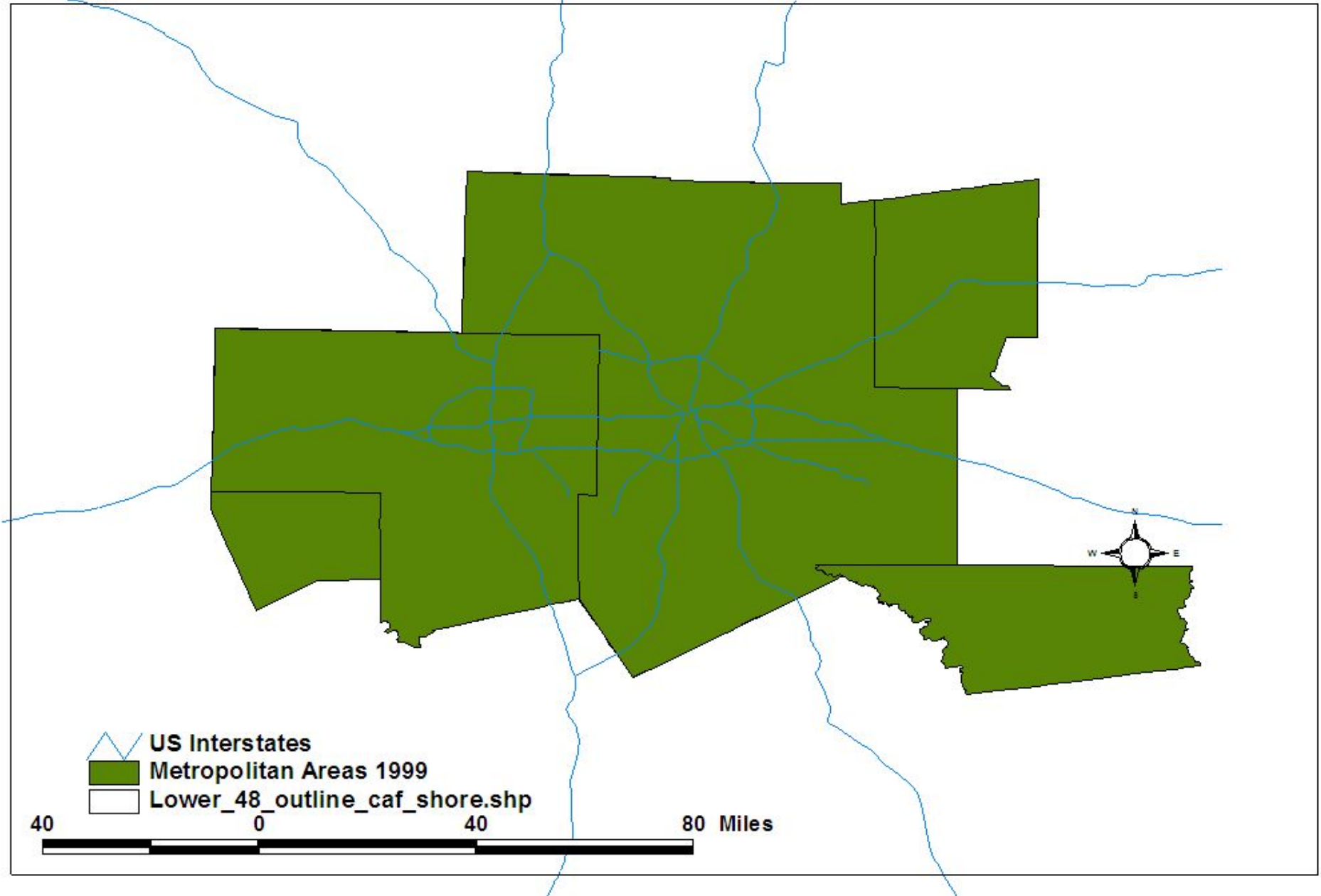
Dallas Urbanized Area 2000



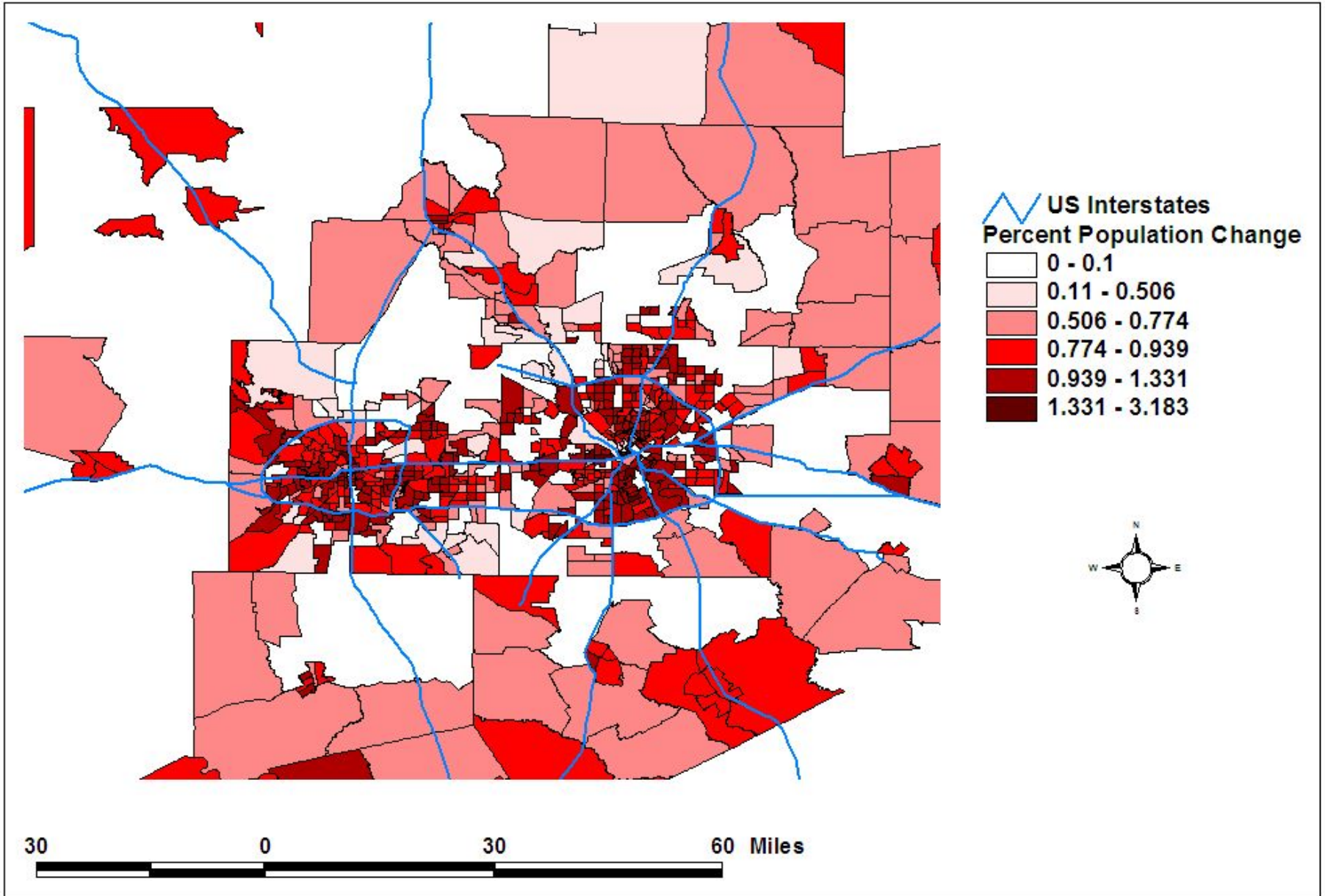
Dallas Metropolitan Area 1990



Dallas Metropolitan Area 2000



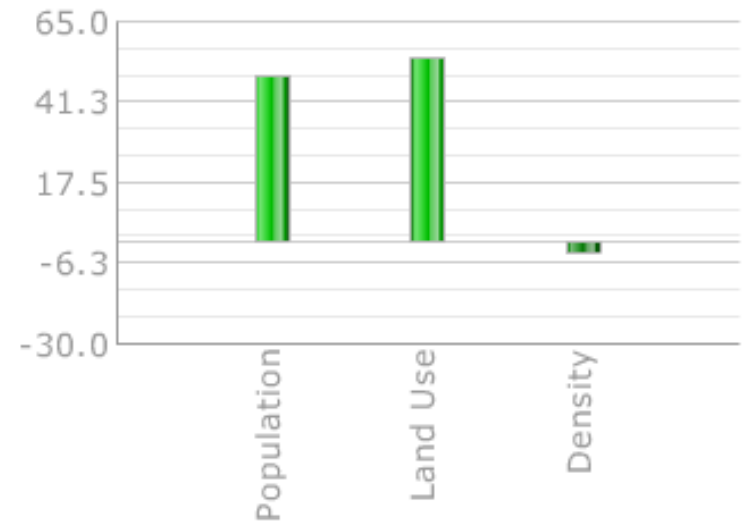
Change in Population (%): Dallas 1990 - 2000



About Dallas-Fort Worth

- With 5.2 million residents, the Dallas-Fort Worth was the ninth largest metropolitan area in the United States in 2000, just behind Detroit and ahead of Houston.

Dallas-Fort Worth-Arlington, TX
Percent Changes



About Dallas-Fort Worth

- It grew by about 30 percent in the 1990s, adding about as many people as Atlanta (nearly 1.2 million)
 - About 4.8 million of the residents
- Its density increased only slightly to 3.3 persons per urbanized acre between 1982 and 1997.
 - And although its density rank went from 39th to 33rd among largest metros, it still remains **very low** for such a large metro area.