



Digital Commons@

Loyola Marymount University
LMU Loyola Law School

Module 11: Bird Migration

Urban EcoLab

April 2021

PowerPoint - Migratory Restlessness

Center for Urban Resilience

Follow this and additional works at: <https://digitalcommons.lmu.edu/urbanecolab-module11>



Part of the [Ecology and Evolutionary Biology Commons](#), [Environmental Education Commons](#), [Sustainability Commons](#), and the [Urban Studies and Planning Commons](#)

Repository Citation

Center for Urban Resilience, "PowerPoint - Migratory Restlessness" (2021). *Module 11: Bird Migration*. 5. <https://digitalcommons.lmu.edu/urbanecolab-module11/5>

This Lesson 5: Observing Seasonal Expression of Migratory Behavior in Pine Siskins is brought to you for free and open access by the Urban EcoLab at Digital Commons @ Loyola Marymount University and Loyola Law School. It has been accepted for inclusion in Module 11: Bird Migration by an authorized administrator of Digital Commons@Loyola Marymount University and Loyola Law School. For more information, please contact digitalcommons@lmu.edu.

Migratory restlessness



Photo by: Thermos

Key science vocabulary

- Migratory restlessness

Migratory restlessness

- Increased locomotor activity (e.g., flying, jumping, wing-flapping) in captive birds during a migratory period

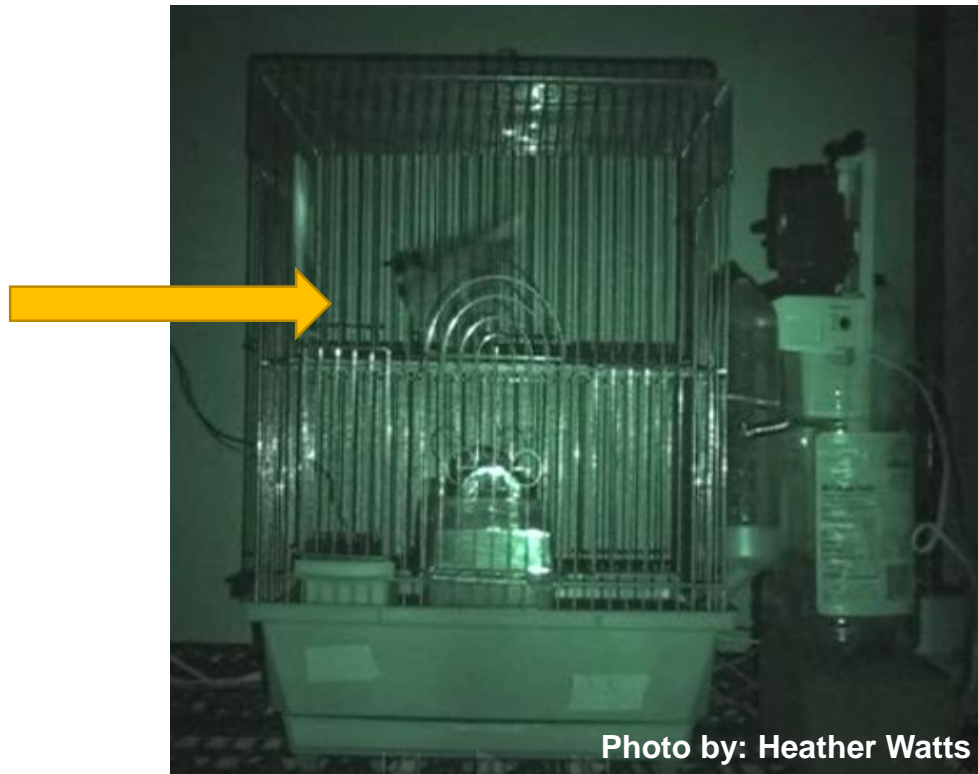


Photo by: Heather Watts

Migratory restlessness

- Birds that migrate in a specific direction will orient in that direction during migratory restlessness
- Birds that are usually *diurnal* (active during the day) but migrate at night will show a dramatic shift from resting at night (when not migratory) to showing migratory restlessness at night (when migratory)