



Digital Commons@

Loyola Marymount University
LMU Loyola Law School

Module 11: Bird Migration

Urban EcoLab

April 2021

PowerPoint - Ethograms

Center for Urban Resilience

Follow this and additional works at: <https://digitalcommons.lmu.edu/urbanecolab-module11>



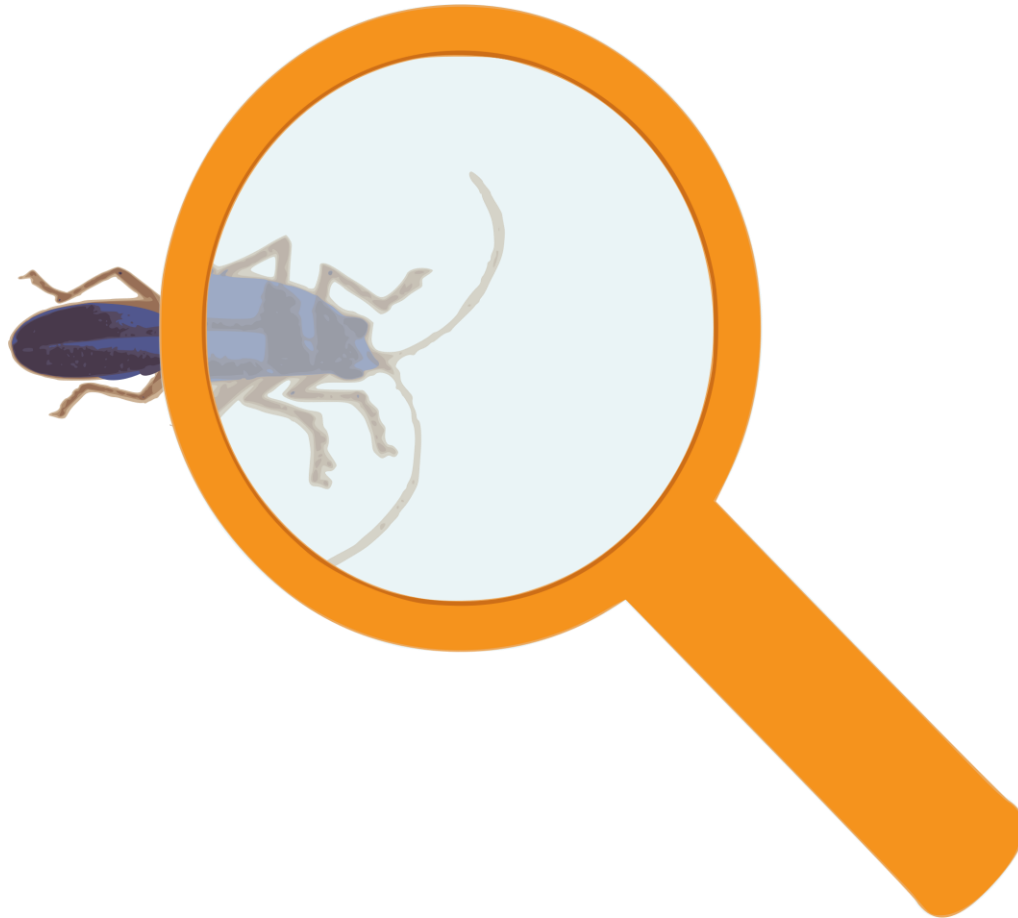
Part of the [Ecology and Evolutionary Biology Commons](#), [Environmental Education Commons](#), [Sustainability Commons](#), and the [Urban Studies and Planning Commons](#)

Repository Citation

Center for Urban Resilience, "PowerPoint - Ethograms" (2021). *Module 11: Bird Migration*. 4.
<https://digitalcommons.lmu.edu/urbanecolab-module11/4>

This Lesson 5: Observing Seasonal Expression of Migratory Behavior in Pine Siskins is brought to you for free and open access by the Urban EcoLab at Digital Commons @ Loyola Marymount University and Loyola Law School. It has been accepted for inclusion in Module 11: Bird Migration by an authorized administrator of Digital Commons@Loyola Marymount University and Loyola Law School. For more information, please contact digitalcommons@lmu.edu.

Ethograms



Key science vocabulary

- Ethogram

Ethogram

- A catalogue of the observable behaviors of an animal

*An essential tool for collecting data
on animal behavior.*

Example from an ethogram

Behavior	Description
Stationary	Sitting in relaxed position, not moving within cage. May move head.

Important elements of ethograms

- Clear descriptions of what behaviors look like
- Can be used by another observer to identify behaviors

Tips for making an ethogram

- Avoid assigning intention/motivation to behavior
 - Notice the description of “Stationary” doesn’t say anything about why the animal is doing this (e.g., it is tired)
- Focus on describing the physical position/motion of the animal
- You should be able to distinguish between behaviors – the descriptions do not overlap.